

## PARISH DIARY

### **Sunday 5<sup>th</sup> January**

8:00am	Holy Communion	St Michael's
10:00am	Holy Communion	St Michael's
10:00am	Holy Communion	St John's
12:00pm	Renewal of Vows	St Michael's
6:00pm	IONA Big Sing	St Michael's

### **Monday 6<sup>th</sup> January**

8:15am	Morning Prayer	St Michael's
1:00pm	Film Club	St Michael's
7:30pm	St Michael's Standing Committee	

### **Tuesday 7<sup>th</sup> January**

8:15am	Morning Prayer	St Michael's
10:15am	Extended Communion	Beechfields

### **Wednesday 8<sup>th</sup> January**

8:15am	Morning Prayer	St Michael's
9:30am	Holy Communion	St Michael's
6:30pm	Choir Rehearsal	St Michael's

### **Thursday 9<sup>th</sup> January**

#### **OFFICE CLOSED**

8:15am	Morning Prayer	St Michael's
10:00am	Knitting Group	St Michael's
7:30pm	Bell Ringing	St Michael's

### **Friday 10<sup>th</sup> January**

8:15am	Morning Prayer	St Michael's
--------	----------------	--------------

### **Saturday 11<sup>th</sup> January**

10:30am	Baptism Preparation	St Michael's
4:00pm	Visiting Bell Ringers	St Michael's

### **Sunday 12<sup>th</sup> January**

8:00am	Holy Communion	St Michael's
10:00am	Family Praise	St Michael's
10:00am	Holy Communion	St John's
6:00pm	Holy Communion	St Michael's

## OTHER

### **PARISH MAGAZINE ANNUAL SUBSCRIPTION 2020**

If you collect your magazine from church or pay me directly, the annual subscription is £8.50 and is due before **January 13<sup>th</sup> 2020**. You can pay me by cheque, "PCC of St Michael and ST Mary" or by cash. I am usually at 10am service or you can phone me, 255909. Many thanks *Barbara Homewood*.

## CHURCHES TOGETHER

### **CHURCHES TOGETHER IN LICHFIELD LENT GROUPS.**

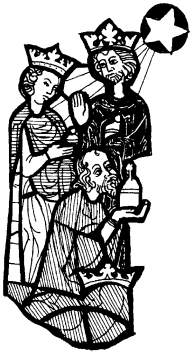
This year we will be using the book 'Saying YES to Life' by Ruth Valerio. The course will begin after Ash Wednesday 26<sup>th</sup> February. If you wish to partake, please fill your details in on the form on the notice board at the back of church by 12<sup>th</sup> January. For further details please speak to *Brenda Liptrot*.

### **SERVICE FOR WEEK OF PRAYER FOR CHRISTIAN UNITY - 'UNUSUAL KINDNESS'**

The service for the Week of Prayer for Christian Unity will be held at Wade Street Church, Lichfield at **7.00 p.m. on Friday 24<sup>th</sup> January 2020**. Tea, coffee and biscuits will be served after the service. All welcome.

In February Christians in Malta celebrate the Feast of the Shipwreck of St Paul, marking and giving thanks for the arrival of Christian faith on these islands and the reading from the Acts of the Apostles used for the feast is the text chosen for this year's Week of Prayer. Hospitality is a much needed virtue in our search for Christian unity. It calls us to a greater generosity to those in need. For further information please see

<https://ctbi.org.uk/weekofprayer>



## CHURCH NOTICES

5<sup>th</sup> January  
**Epiphany**

**A WARM WELCOME** to any visitors here today. Please stop for a chat after the service.

### **AIDS TO WORSHIP**

~Large print orders of service & hymn books

~Hearing Loops at St Michael - Please set your hearing aid to 'T' to listen.

~Gluten-free wafers are available.

## **EVENTS**

**FILM CLUB Mon. 6<sup>th</sup> January** Lunch 1pm. Film 1.30pm.

**TUESDAY CLUB** will be held on 14<sup>th</sup> January at 2.30pm in St Michael's Church. The topic is 'An ecclesiastical affair- scandal and libel in a Victorian Black Country Parish' and the speaker is Revd Chris Baker. Everyone is welcome to come along and hear the story of a clergyman's indiscretion; an episcopal enquiry; the widespread circulation of scurrilous poison pen letters; and a nationally reported libel trial.

**UNITED BENEFICE WALKING GROUP** We invite you to join us for our January Walk at Barton Marina on **Saturday 18<sup>th</sup> January**. We meet at **10.00 a.m. at St Michael's**. We will park on the main car park and **start at 10.20am** by walking a very short distance to the Barton Marina Café, for coffee and cake! We will then walk around the lakes and alongside the marina to see the canal boats (and the shops). We will be walking mainly along hardcore paths, one section of grass and paved paths. There is usually plenty of birdlife to see on the pools. The distance of this walk is 1 1/2 miles. Depending on time & inclination you can either then join me for a 1 1/2 mile walk down to Barton Turns and along the canal to see the entrance to the marina or, if you prefer, you can have a mooch around the shops.

Lunch is booked at **The Waterfront for 12.30pm**. To see the menu go to <http://waterfrontbarton.co.uk/food-drink/menus/> We have a table for 16 people. & we will probably be asked to pre-order food. If you do not get your name down on the group list you will still be able to order your food on the day.

We should be back in Lichfield by 2pm. My contact details are

☎ 07785988716

✉ [angieking000@gmail.com](mailto:angieking000@gmail.com)

## **VOLUNTEERING AND CHARITIES**

### **ST MICHAEL'S CHURCH FLOWERS**

A big thank you to everyone who helped make our church look beautiful this year. The new flower rota will be available at the back of church. Please can you sign up for at least one pair of Sundays. Thank you, *Diana*

**LICHFIELD FOOD BANK.** Thank you for your continuing support for Lichfield Foodbank. The latest needs are

- 500g bags of sugar,
- snack bars (muesli/breakfast bar type)
- red and brown sauces