

# THE PARISH MAGAZINE

## August 2021



THE CHURCH  
OF ENGLAND

---

GROWING FAITH

**The United Benefice of  
St Michael Lichfield, with St John, Wall**

**85p**

<b>Rector:</b>	<b>Curate:</b>
<b>Associate Minister (NSM Part-time): The Revd. Ruth Bull</b> 36 Broadlands Rise, LICHFIELD, Staffs, WS14 9SF Tel: 01543 252123 Email: <a href="mailto:dkbrlcb@hotmail.com">dkbrlcb@hotmail.com</a>	<b>Assistant Minister (PTO) The Revd. Jeyan Anketell</b> 7 Wissage Lane, LICHFIELD, Staffs, WS13 6DQ Tel: 01543 268897 Email: <a href="mailto:jeyan.anketell@ntlworld.com">jeyan.anketell@ntlworld.com</a>
<b>Assistant Minister (PTO) The Revd Chris Baker</b> 15 Saddlers Close, Lichfield, Staffs. WS14 9ZW Tel: 01543 256320 Email: <a href="mailto:C.J.Baker@bham.ac.uk">C.J.Baker@bham.ac.uk</a>	<b>Assistant Minister (PTO) The Revd. Stephen Barton</b> The Master's House, St John's Hospital, St John Street, LICHFIELD WS13 6PB Email: <a href="mailto:stephen@the-bartons.com">stephen@the-bartons.com</a>
<b>Assistant Minister (PTO) The Revd Christine Polhill</b> Little Hayes, Beaudesert, Cannock Wood, Staffs WS15 4JJ Tel: 01543 674474	<b>Reader: Lesley Allen</b> 21 Boley Close, LICHFIELD, Staffs, WS14 9AR Tel: 01543 251654 Email: <a href="mailto:lesley.allen21@gmail.com">lesley.allen21@gmail.com</a>
<b>Reader: Phil Clayton</b> 23 Follows End, Burntwood, Staffs, WS7 3QZ Tel: 01543 682141 E-mail: <a href="mailto:phil@phil-clayton.uk">phil@phil-clayton.uk</a>	<b>Reader: Trevor James</b> 36 Heritage Court, LICHFIELD, Staffs, WS14 9ST Tel: 01543 258434
<b>Reader: Alan Toplis</b> Streethay Lodge, Streethay, LICHFIELD, Staffs, WS13 8LR Tel: 01543 414651 E-mail: <a href="mailto:alan.toplis@toplis.co.uk">alan.toplis@toplis.co.uk</a>	
<b>SAFEGUARDING CO-ORDINATOR FOR ST MICHAEL &amp; ST JOHN Maureen Brand 01543 264880</b> For advice about safeguarding or to raise a concern please contact Maureen.	<b>United Benefice Office</b> St Michael's Church, Church St, LICHFIELD, Staffs, WS13 6ED Mon, Tues, Wed & Fri <b>CLOSED</b> Thursdays 9.00 am to 12.00 noon. Tel: 01543 262211 E-mail: <a href="mailto:office@stmichaelmaryjohn.org.uk">office@stmichaelmaryjohn.org.uk</a>
<b>St Michael's Church</b> Church Street, Lichfield, Staffordshire, WS13 6ED	<b>St John's Church</b> Green Lane, Wall, Staffordshire, WS14 0AS

## Reflection.....

It can be very irritating to learn of other people's autobiographies and be subjected to their special interests in a church magazine 'reflection'! What follows does both of those things.

When I attended my Confirmation course in 1960-61, amongst the wisdom that we received from our tutor, the curate of St Mildred's Church in Addiscombe, was an observation that he could not understand the preoccupation of the adult population with 'the weather'. He found it profoundly disconcerting that they could not find more serious issues to occupy their attention. As someone who has devoted most of their sporting life to supporting a year-long outdoor all-weather sport, in terms of track and field athletics and cross-country running, the state of the weather has never really affected my everyday life.

The community's fixation with the weather is very deep-seated. On 15 July the Church will have celebrated St Swithun's Day. There is a strong possibility that at least one weather forecaster or news reader on that day will have mentioned the link between St Swithun and rain! The legend is that if there is substantial rain storm on that day, heavy rain will follow for another forty days. There is science behind this: people that we would now describe as 'folklore forecasters' had noticed over time that, if it rained heavily in mid-July, it did seem to rain heavily for the many days that followed. This practical 'scientific' observation has become merged with a story relating to St Swithun. He had been an extremely popular Bishop of Winchester. When he died in 862, he had arranged to be buried in the Cathedral cemetery and his tomb was positioned just outside the Cathedral's west door. This means that when it rained water from the Cathedral roof spilled down on to this very humble man's tomb. In major reconstruction work at the Cathedral Bishop Ethelwold made the decision to move St Swithun's remains to a shrine inside the cathedral. This took place on 15 July 971. Many cures occurred around this new burial place but a most

significant event accompanied the unveiling. There was a tremendous rain storm and it was believed that this was a manifestation of St Swithun's power and influence. The rain storm on that occasion was seen as a protest from beyond his grave by this holy man who had enjoyed having his tomb under cascading water from the Cathedral roof.

There is another saint particularly associated with weather. St Martin of Tours is celebrated on 11 November and folklore forecasters noticed over time that, if there was particularly good weather on his feast day, it would be followed by a particularly mild spell of weather, making it unusual for mid-November. This phenomenon is still known as 'St Martin's Summer'.

These two stories tell us just how aware people were of the weather conditions in which they lived and how they had associated their experience with their spiritual life. They had recognised patterns and attributed these to divine providence, in other words they believed that they were witnessing the power of God in what was happening.

The belief that God controlled Earthly experiences, such as the weather patterns, was very deep-seated. It went well beyond the weather. In the late Sixth Century during a severe outbreak of plague in Rome, Pope Gregory the Great saw a vision of St Michael in the sky – he knew it was St Michael because he was wielding a sword as one would expect of the Captain of the Heavenly Host – and Gregory believed that this intervention led to a sudden disappearance of the plague.

It was this Pope Gregory who sent St Augustine on his famous mission to England in 596. Augustine had a very clear instruction from the Pope about how to conduct his mission: instead of setting up in competition with local religious cults and faiths, St Augustine was instructed to take over existing religious sites and make them Christian. This is the explanation for the extraordinarily large number of over 680 early St Michael churches in England. They reflect the

response of Gregory the Great to a crisis in Rome and how he believed utilising the power of St Michael would make a significant difference to this mission. Using the St Michael dedication demonstrated that good had triumphed over evil. Archaeological evidence from many ancient St Michael sites, such as our own here on the Lichfield Greenhill, confirms that previous religious activity preceded the Christian presence.

So far you may feel that I have indulged myself with autobiography and my research interest but there is a wider spiritual point for us all to share. The people of the past believed in a very direct way that they were part of a Heavenly plan. In this post-Darwinian world we may be surprised by the intricacies of what they believed but we share with them a strong sense of an interface between us and God, a direct relationship.

Different people will hold this belief differently but it is a shared feeling. We know that we have received extraordinary blessings from the teaching, the life, the death and the Resurrection of Jesus, and it this is what drives our faith. We continue to practise that faith on our Greenhill and beyond, as we did during the worst of the Pandemic and will also do into the future. What we do, we do in the Name of Jesus who influences our lives all the time.

*Trevor James*

*PS Copies of Trevor's latest book—"Come Wind ... Come Weather" are still available from the Editor price £10 (all proceeds to St Michael's Church funds)*

---

## **Covid-19: Bishop Sarah's tribute to sacrifices of many as Government prepares to lift restrictions**

The Bishop of London, Sarah Mullally, who chairs the Church of England's Covid Recovery Group, has paid tribute to the sacrifices of many amid the pandemic as the Prime Minister outlined plans to lift most restrictions from July 19.

She said: "I welcome the Prime Minister's presentation of the latest scientific data which underpins their decision in principle to lift most restrictions from July 19.

"The vaccination programme has been an answer to prayer but, while it has transformed the outlook of the pandemic, it has not eliminated all risk.

"So it is right, as the Prime Minister has said, that we all must exercise personal responsibility and carefully manage the risks from Covid-19. "As Christians, called to love our neighbour as ourselves, we must also exercise collective responsibility and continue to take appropriate precautions to protect others.

"Over the past 18 months we have mourned the tens of thousands who have died from Covid-19.

“We have also all made sacrifices and seen previously unimaginable changes to our way of life as we sought to protect one another and especially those who are most vulnerable.

“In churches that has meant unprecedented restrictions on the way we practise our faith itself, affecting our ability to meet together, to sing together and to celebrate the sacraments together, all of which are at the heart of our worship.

“We have also seen particular restrictions on the way we marked major events in our lives through baptisms, weddings and funerals; sadly many were denied the basic comforts of sharing moments of joy and pain with others.

“I have been inspired by the way churches have risen to the challenge, finding new ways of gathering to worship God, reach out and serve their neighbours in these difficult times.

“I have been deeply moved by the extraordinary efforts of those working on the front line in our NHS and social care.

“I would also like to highlight the sacrifices, often overlooked, made by children and young people to protect us all for so long during such a formative time in their lives.

“I am also mindful of those whose lives have been radically changed by the effects of Long Covid.

“We will await the new Government advice for places of worship and adapt our guidance to churches accordingly.”

*Published Mon, 5 Jul 2021*

<https://www.churchofengland.org/media-and-news/news-releases>

# GROWING FAITH

**There is, it would appear, more social and spiritual conscience amongst the young there has been for many years.. Where this is being nurtured, we are seeing extremely positive outcomes within our schools spreading out into the local community and beyond.**

Growing Faith has opened doors to several significant ventures between school, church, and community. One such venture has involved close working with a Christian charity called *"Feed the Hungry"*. This came out of a heart to heart in our schools to learn more about social responsibility and Global citizenship in a communal and practical way. Schools and churches have come together to fund and run *"Hand to Hand"*. food packing events whilst having the opportunity to discover more about worldwide poverty and social inequality. It has even seen a visit to Kibera, in Kenya, by school staff, clergy and church members.

Other ventures have had impact closer to home with churches and schools jointly running community store cupboards that have been especially helpful to struggling families during the school holidays.

The environment has also acted as a focal point for some joint working. Churches and schools have come together as courageous advocates through *climate action days*. With support, children have challenged companies on their practices and policies, written to MPs, composed prayers and pledges, and taken part in celebration worships – all around the issue of the environment.

Such work is not only missional, but also an opportunity for our



children and young people to engage in big theological questions such as: What is God's heart for His creation? What part do we, as individuals, have in His world?

**Alex Wolvers, Lichfield Diocesan Board of Education** (writing in the Summer 2021 edition of Archdeacons' visitation news)



## Deadlines!

For **September** Magazine: Deadline is  
**MONDAY 16th August**

Contact David Shiel  
[shielfamily@gmail.com](mailto:shielfamily@gmail.com)

**Pew Sheet:**  
every Thursday 7:30am  
Contact Parish Office



THE CHURCH  
OF ENGLAND

---

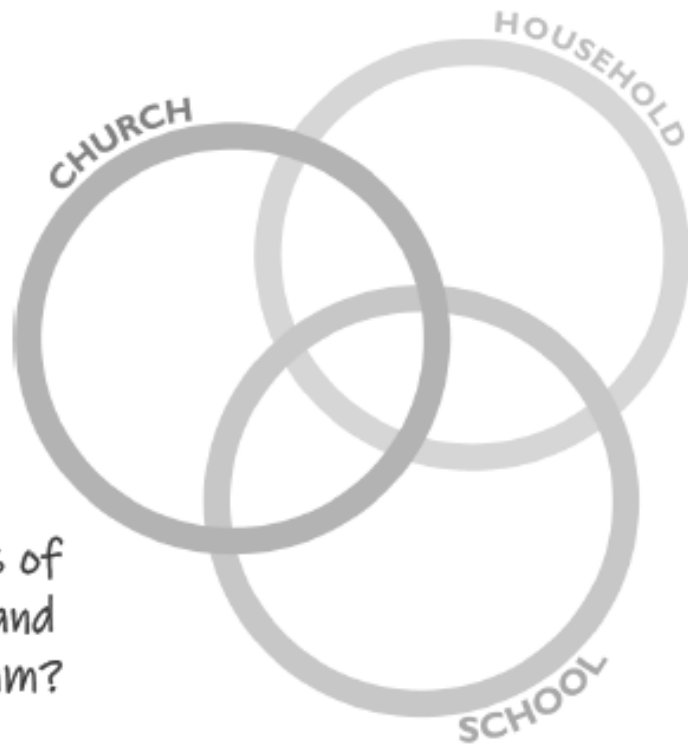
GROWING FAITH

*The Growing Faith Adventure is a call for the renewal of hearts and minds so that it becomes second nature to include and value children, young people and households in every aspect of church life for the lifelong formation of faith in the whole of life.*

*February 2020*

Growing Faith promotes a partnership between the three communities of Church, School and Household to enable the discovery, exploration and growth of faith for **all** in those communities. The partnership is imagined as intersections of a set of overlapping spheres to find and promote ways to help faith to grow with children, young people and households.

Where would the people active in your worshipping community fit in this diagram?



Where do the activities of the church, household and school fit in this diagram?

Each 'sphere' might already be interacting with one of the others, but more contexts need to demonstrate clear and fruitful interaction between all three – the 'central intersection'. The intersections encourage a joint venture or activity seeking opportunities for developing prayer and gathering for worship, leading to conversations about Christian faith being normalised. The question Growing Faith is asking of worshipping communities is whether our **DOING** has helped us **BECOME** the whole people of **God?**

**What are the shifts in attitude needed that will enable that *becoming*?**

## What might Growing Faith look like?

Some questions to discern the answer:

1. Who is it for?
2. Does it connect communities and develop relationships so that children and young people are included?
3. Is there the opportunity for children and young people to have spiritual encounters?
4. Where are the opportunities for children and young people to share the story of their encounters?

## Growing Faith Principles

Three principles are shaping our approach to Growing Faith:

**Connected Communities** - *looking for the meaningful connected community of faith in the intersection between church, school and households.*

**Spiritual Encounters** - *engaging in conversations about and expressing faith as people encounter God as individuals and together.*

**Imaginative Practices** - *searching for 'a new way of being church' and creating new thinking and new doing in relation to children, young people and households.*

Assessing any activity, vision or attitude through the three Growing Faith principles helps to draw the thinking toward that central intersection where all three communities are operating in partnership.

*The vision is a call to aim for the central intersection of the three sphere, so that our communities of faith might include and value children and young people as fellow pilgrims.*

## Outcomes—Faith grows through...

### ...BEING

*fostering attitudes that demonstrate children and young people are...*

### Valued

*Recognised as created in God's image, not learning to be*

### Included

*Children and young people feel a sense of belonging*

### seen as Equals

*The inherent culture of the community perceives them as Fellow Pilgrims*

### ...and DOING

*activities that 'happen' in the central intersection*

### Encountering God

*Opportunities for prayer, spiritual encounters, expressing faith etc.*

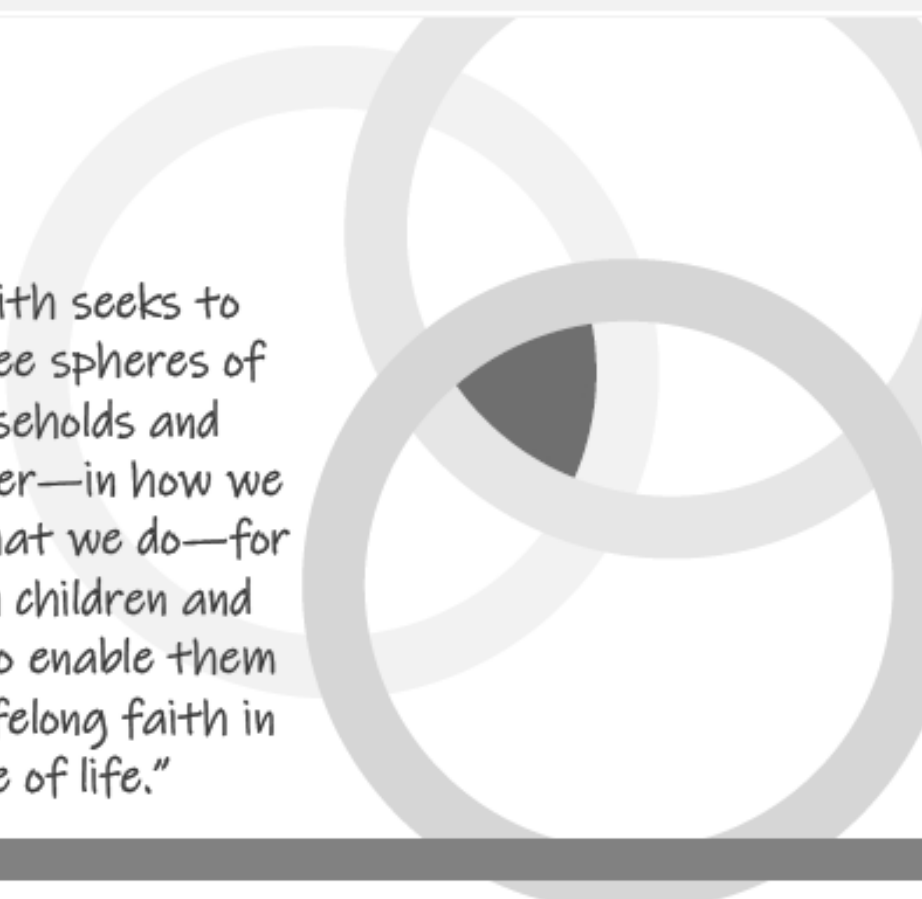
### Conversations about Faith

*Opportunities to hear and share stories of discipleship, normalising the spiritual*

### Relationships

*Connections within community, safe space, interacting across generations*

*None of these happen in isolation—it is in the dynamic interaction between the 'beings' and 'doings' that fertile ground is cultivated where faith may grow.*



*"Growing Faith seeks to bring the three spheres of church, households and schools together—in how we think and in what we do—for ministry with children and young people to enable them to live out a lifelong faith in the whole of life."*

## PERSISTENCE IN PRAYER

Written by Rev Canon  
Libbie Crossman

Diocese of Lichfield

Mothers' Union Trustee for Zone C (*Aotearoa, New Zealand and Polynesia, Australia, Melanesia, Papua New Guinea*)

**Scripture: Do not worry about anything, but in everything by prayer and supplication with thanksgiving let your requests be made known to God** (*Philippians 4:6*)

As a young child I asked my mother what prayer was. Her answer has stayed with me, 'Prayer is all of your life'. While it took quite a bit of time to work that one out, my answer now is, when asked, 'Prayer is our conversation with God'. A two-way thing and if I want to maintain my relationship with God, I need to maintain that conversation.

Members from Papua New Guinea are taught from an early age that daily prayer is a part of their lives. In most instances morning prayer from their Prayer book is a daily ritual. Also at the end of every Eucharist no one moves from the church until the candles are extinguished and it is a time of silent prayer.

Another help to my prayer life was a sermon, still when I was quite young, that included the word ACTS, as a pattern for prayer. Adoration, confession, thanksgiving and supplication – that is praying for our wants and needs. I have used it ever since, I cannot go to sleep without praying with this formula, although nowadays the supplications for myself are often lost as I fall asleep!

So along with regular formal prayers and essential 'arrow' prayers, my conversations with God are regular, with moments all day to hear God, joyful and I hope never ending.

## **Prayer points**

For each of the four provinces in Zone C to recover from the effects of COVID-19.

For those grieving and rebuilding their lives due to loss of income, supplies and stability.

For more families to be helped through the Parenting Programme in Melanesia

## **Our Impact**

### **Community Transformation through Literacy and Agriculture (CTLA), Democratic Republic of Congo**

DRC Mothers' Union is starting a new three year project to reduce gender-based violence and poverty through literacy and agriculture training.

Despite a wealth of natural resources, DRC is one of the world's poorest countries. In 2019, over three quarters of its population were estimated to be living below the poverty line. Economic opportunities in DRC are very limited with over 70% of the working population employed within the agriculture sector. Yet with over 80 million hectares of farmland, only 10% is used.

During MULOA (Mothers' Union listens, observes and acts) and through many years of working with vulnerable women, MU DRC identified illiteracy as the main barrier facing vast numbers of communities in moving out of poverty. Lack of basic literacy and numeracy skills prevents them from running their own businesses and income generating activities, and undermines their confidence and ability to engage.

The aim is that within the three year duration of the project, beneficiaries will improve their literacy levels and agricultural knowledge and skills and start their own business activities. Similar projects have also seen women go on to leadership or decision making roles at community level.

In order to realise these changes, the project will deliver a programme of literacy, business and agricultural skills training through community based literacy circles, savings and credit groups and farmers cooperatives for 6,6500 people across 12 Dioceses of the Anglican Church of Congo.

In addition to its expected outcomes, the project hopes to contribute to a reduction in sexual gender based violence at household and community level and improvements in levels of basic health, hygiene and nutrition as the content of materials and stories used in the literacy programme promotes better awareness and understanding of these issues. The literacy circles, savings groups and farmer cooperatives offer safe spaces in which people can share their concerns and experiences and learn together without fear of conflict or retribution.

## THANK YOU

We take it for granted that ever month the United Benefice magazine will be available to read. Like most things in life the magazine takes a lot of organisation and quite a few volunteers are needed to pull it together.

**Eileen Carson** has been diligently making sure that the magazine for St Johns, Wall is available to all of those who want it. Apparently, she took over the role from Nancy Hood. Time flies, and it was in 2003 that she kindly volunteered. After this long period Eileen now needs to take a break and hand over the role.

During the pandemic some changes were made to how we pay our subscription to the magazine and apparently the change has proved successful.

I have therefore agreed to take over the role of St John's distribution without the task of collecting money.

We thank Eileen for the conscientious approach she gave to volunteering for so long to The Parish magazine distribution.

*Hilary Barker*



# CHILDREN'S SERVICES & ACTIVITIES

## First Steps



**Monday 6th September**

**10am St Michael's**

## Family Praise

**Sunday 5th September**

**10am St Michael's**



Come and join us at our ...

## MESSY CHURCH

for craft, story, song and food on



**SUNDAY 12th September**

4.30 – 5.30pm

in St Michael's Church

Ages 0-11 yrs. welcome

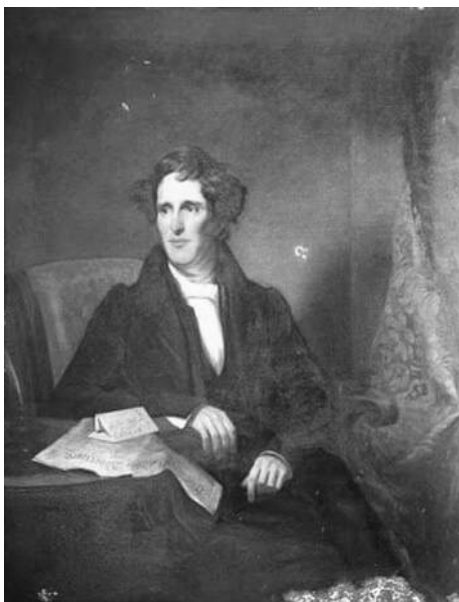
# HISTORIC CHURCHYARD

## WALKS

The first of two walks, held on Saturday, 3rd. July, was well attended. Our guide was St. Michael's own

Trevor James, Reader of this Parish, and also published historian and researcher. Overnight rain caused wet underfoot conditions, but this did not spoil the ardour of either audience or speaker. Trevor's knowledge is formidable and is interlaced with interesting off-the-cuff anecdotes. \*

The well-known monuments visited included Chancellor Law's family tomb, the Petit family vault, and the Philip Larkin memorials.



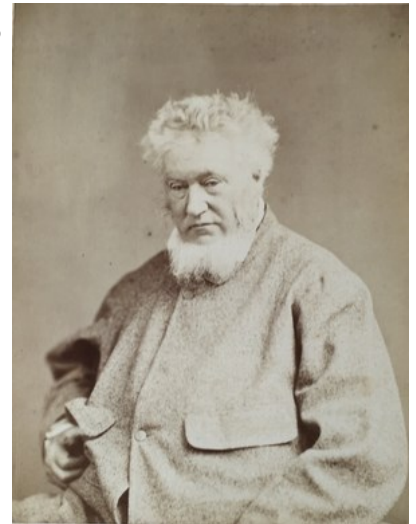
Chancellor J. T. Law (1790-1876) was an influential member of the cathedral and a local benefactor. His monument held a gas lamp which lit the way for travellers going to and from the main line railway station. His tomb is sadly in need of repair, estimated to cost £10,000; but funds are lacking at present. The ravages of time and weather have left their marks on many of the old

stone memorials. Maintenance repairs must be carried out with official



permission and be done with sensitivity. Only qualified archaeologists are allowed to dig there. Who knows what items of interest lie undiscovered! This, after all, is also a pre-Christian Burial site.

The Petit Society, founded by Philip Modiano, has erected a very good information board near the Petit family vaults. The Rev. J.L.Petit (1805- 1868) was briefly a curate at St. Michael's, but gave it up to concentrate on his art and opposition to the Gothic revival. "Petit's Tours of Old Staffordshire" by Modiano is a good read.



Philip Larkin (1962-1985), one of the notable post-war poets, had a brief association with Lichfield when his family was evacuated here during WW2 to escape the Coventry blitz. His relatives' gravestones can be found if you know where to look. The poet briefly visited the churchyard to see them. He himself was buried in Cottingham cemetery.

The walk contained much more than has been described here. To explore the churchyard, either alone or in company, especially the large, densely wooded area can provide a moving and aesthetic experience.

*\*The next Historic Churchyard Walk is on Sat. 4th Sept. 2021 at 10am.*

Margaret Freaan

<https://www.stmichaelmaryjohn.org.uk/tour-of-st-michaels-churchyard---monuments-and-memorials.html>

## St. Michael's Churchyard

An insect bed was made 3 years ago by sowing a woodland mix of seed. This was very successful, resulting in many wild and garden plants, a number of which have spread profusely. At our June Working Party we noticed a large number of bees on one of the wild plants called Hedge Woundwort, an attractive tall plant with dark purple flowers. This is very encouraging and helps to increase the number of insects we get in the Churchyard. Four other plants that continue to do well in this bed are Nigella, also known as Love In A mist; Borage; Lemon Balm and Wild Strawberry.



*A bee flying to a woundwort flower.*



*Borage flowers.*



*Wild strawberry plants with their newly formed fruit.*

At our July Working Party we planted a large number of herbs in the insect bed, in the hope that there will be lots more bees and other insects visiting the flowers.

The new herb plants are:

Sweet Woodruff  
Mint  
Lavender  
Lemon Verbena  
Rock Hyssop  
Feverfew  
Curry Plant  
Calamintha  
Chives

Common Thyme  
French Tarragon.  
Golden Marjoram  
Green Fennel  
Purple Sage  
Garlic Chives  
Nasturtium  
Dark Opal Basil  
Curled Parsley.

Do look at and follow the progress of these herbs in our Insect Bed which is situated by the side of the path near to the outside tap and the Churchyard Notice Board.



*The newly planted herbs.*

Our next Working Party is on **Saturday August 14th., from 10.00 a.m. to 1.00 p.m.** One of our main tasks will be to do an initial cut of the Wild flower plants growing in the meadow. Shears, loppers and other cutting tools will be provided. Please join us if you can. We ask you to please bring your own food and drink for the **Mid-Morning Refreshment Break.**

Ray Allen      251654

## News from the Hawksworth Family in Hong Kong:

June proved to be a busy month for us. Lots of birthdays and lots of outings to celebrate.

Ellie's birthday followed mine and the thing she most wanted to do most was go to Disneyland and eat Micky Mouse waffles!

So, Ellie and her friend Kelly, along with Milo and his friend Naryths and I all went to Disneyland for the day! It's much smaller than the park in Orlando and could be easily done in half a day. However, we stretched it out with lots of food stops along the way!



We were told that, once we arrived, there was a lovely place we could go to, to get Mickey Mouse waffles. The children enjoyed them very much!

The rides were good and we didn't have to queue for long on all of them. Ellie loved the teacups and Milo really enjoyed the Star Wars rollercoaster. \*

Due to COVID-19 the park was limited as to how many people they could let in. You have to reserve a place online and then book a week before you actually want to go.

Rupert and Gabriel continue to enjoy school. We had Rupert's assessment evening on Saturday. His teacher, Ms Lee is really pleased with his progress. He has a good grasp of Cantonese both understanding and listening and gets along well with school!

Ellie and Milo are enjoying their school break too. Between them it's a mixture of playing with the neighbours and lots of sleep overs!! Milo is now out of his cast all together which is great! He has lots more movement and range!

The wet season has started and we've already had some wonderful lightning storms. Daily temperatures seem to hover around the 33° mark, sometimes getting much, much hotter!

We hope everyone one is doing well!

Please stay safe.

With love,

The Hawksworths

*\* the teacups were my favourites at Disneyland California, closely followed by 'Splash Mountain' (Editor)*

<https://www.churchofengland.org/resources/world-mission/mission-agencies>



<https://www.crosslinks.org/>

The birth of Crosslinks in October 1922 was a quiet affair. A group of believers met ‘with sadness of heart’ as they clung in faith to their deepest held convictions and decided to leave an older, more established organisation.

Just over a hundred years before, two-dozen men had met to found the Church Missionary Society (CMS). This society sent out men and women across the globe, taking the gospel of Christ to those who had yet to hear the good news. William Wilberforce, one of those involved from the start, pushed for the new missionaries to hold fast to the authority of Scripture and point to the saving work of Christ.

But a century on the society hit rocky ground. Theological liberalism had taken hold of England and the CMS leaders pushed for a loosening in requirements regarding the faith beliefs and practices of missionaries.

Determined that the society must not scrap its original principles and purposes, a group of CMS members realised that they had to make a



decisive break. So in 1922 Crosslinks was born (then known as the Bible Churchman's Missionary Society). With fresh energy and determination, men and women were sent off to new ground and the new society became a strong voice in strengthening Anglican churches at home and abroad.

Some of the first Crosslinks missionaries were sent to China, India, Burma, the Arctic and Iran. A few years later work extended into Africa, Europe and, more recently, South America and Australia. Since those early days, men and women have proclaimed the gospel of salvation in Christ in a variety of contexts in over 50 countries. On top of this, local and national churches have been resourced and encouraged for mission through a range of projects and training courses.

As we approach the Crosslinks centenary, we can say that God has been faithful to that small group who decided to break from CMS. Today Crosslinks continues to retain the vision it started with of bringing God's word to God's world '*on account of the word of God and the testimony of Jesus*' (Revelation 1:9). We pray for that same sense of purpose and uncompromising determination to be faithful in our day and generation.



## A VIRTUAL WEDDING IN JUNE

The invitation to the virtual wedding of our niece in South Africa was a lovely surprise and gave us something to look forward to during our rather humdrum lockdown existence here in Lichfield. Accustomed as we are with Zoom and Skype to maintain contact with our family living on several different continents, as well as joining virtual services from St. Michael's we were apprehensive about being able to receive the transmission of a whole wedding ceremony at such a distance.

The ceremony took place at Sterkfontein in Gauteng (formerly Transvaal) province. It was a traditional prayer book service presided over by a woman Anglican priest, with a sense of humour suitable for the occasion. The congregation was a small one who kept their distance from each other. On-line viewers numbered 200. Our view of the proceedings was the same as the priest's, with the bride and groom facing us with the guests behind them.

The bride wore a traditional long white, off the shoulder, dress. The groom wore a smart grey suit. They both looked radiantly happy throughout the proceedings. Three bridesmaids were in attendance. Both bride and groom are members of Youth With A Mission and had recently attended a Bible training course in Taiwan. She is South African and he is from Finland. His parents had flown over from Helsinki especially for the service and contributed, unusually, by singing a duet, which added a joyful note to the occasion. The bride's grandfather read one of the lessons.

The ceremony was conducted in a spirit of improvisation and happy spontaneity with much joking and laughter, encouraged by the priest, when things did not quite go according to plan. The camera-work occasionally went awry. Although the quality of the pictures we received on our screen were not always as clear as we are used to, we felt privileged to know that we were witnessing the event at first hand. Thanks to God for the wonders of modern technology.

*Margaret and David Freaan*

# Bible Readings

**Sunday 1st August**  
**Ninth Sunday after Trinity**  
**[Green]**  
Eph 4.1-16  
John 6.24-35

**Sunday 8th August**  
**Tenth Sunday after Trinity**  
**[Green]**  
Eph 4.25-5.2  
John 6.35, 41-51

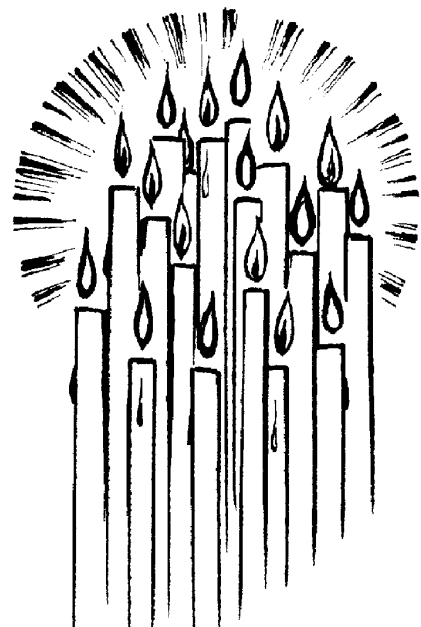
**Sunday 15th August**  
**The Blessed Virgin Mary**  
**[White]**  
Gal 4.4-7  
Luke 1.46-55

**Sunday 22nd August**  
**Twelfth Sunday after Trinity**  
**[Green]**  
Eph 6.10-20  
John 6.56-69

**Sunday 29th August**  
**Thirteenth Sunday after Trinity**  
**[Green]**  
James 1.17-end  
Mark.7.1-8,14-15,21-23

**Sunday 5th September**  
**Fourteenth Sunday after Trinity**  
**[Green]**  
James 2.1-17  
Mark 7.24—end

**Sunday 12th September**  
**Fifteenth Sunday after Trinity**  
**[Green]**  
James 3.1-12  
Mark 8.27-end





SUCK, LORD



90% OF CHRISTIANS HAVE NEVER  
READ THRU THE ENTIRE BIBLE

# PROVERB

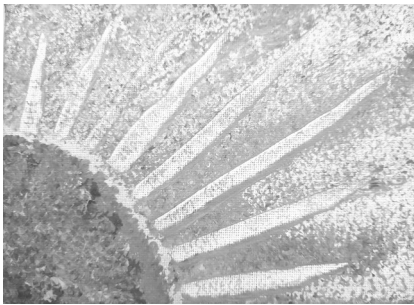
# PRAYERS



## 4.13-19

<sup>13</sup> Hold firmly to my teaching and never let go. It will mean life for you.

<sup>14</sup> Don't follow the bad example of cruel and evil people. <sup>15</sup> Turn aside and keep going. Stay away from them. <sup>16</sup> They can't sleep or rest until they do wrong or harm some innocent victim. <sup>17</sup> Their food and drink are violence and cruelty.

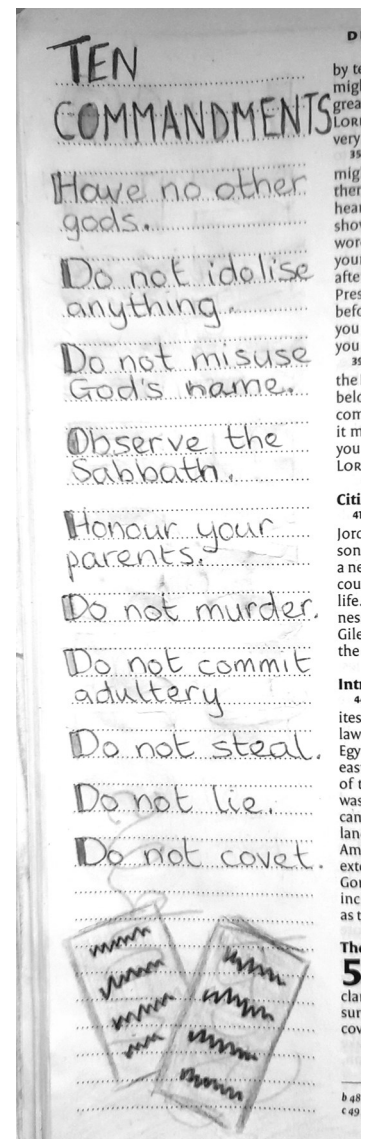


<sup>18</sup> The lifestyle of good people is like sunlight at dawn that keeps getting brighter until broad daylight.

*Father Almighty, your path is the true path that leads to happiness. Thank you for choosing me to travel along your path. Sometimes it has been hard to stay on it and not become distracted or drift away but I know that your path is the right one to follow.*

*Help me to put you first in all that I do so that I maintain a good lifestyle. Send your Spirit to remind me to keep your commands and always turn my face towards the light.*

*Lord Jesus, I do my best to hold firmly to your teaching. Please be with me when my best is not quite good enough.*



*Angie King*

## Luke Cotton

Many of you will have heard that a young man died in a motorcycle accident on Eastern Avenue on 16 June, but you may not know that he was a member of the 2018 Camas group. His name - Luke Cotton. We always welcome friends of our regulars to join us at Camas and



Luke came along with Reuben Tinsdeall. As a climber, mountain walker, kayaker, sailor and a geologist, who knew all about the Western Isles and their creation, he was made for the trip. He was also enormous fun to be with and bought fully into the community spirit that makes Camas so special. I had him down as a bit cocky and a 'ladies man', both of which qualities were mentioned by his family and friends at his funeral in early July!

*Luke with friends*

But what I learnt about Luke at his funeral was how much deeper his qualities went. It was a mixture of testimonies by family and friends, interspersed with his favourite music. He lived life to the full but he wasn't just a taker of what life offered, he was a giver too. He was devoted to his family and spent a lot of time with his grandparents in France. He would have a go at any sport and boxed to raise money for Cancer UK. He was a Scout, as are many of the Camas group. He loved the two family dogs and was never happier than walking them in the countryside. He made friends easily, but kept them because he cared about them, and helped them whenever he could. There were six young members of the Camas group at his funeral and for many of them the friendship stemmed from that week together in August 2018. As well as being lots of fun, Luke was the person you went to

with a problem and I gather that his answer was often to say, “Let’s make a plan.” I certainly didn’t see that side of him, but it appears he got so much out of life because he organised his time to make sure that he could fit in his many commitments and friendships.

He graduated this year with a 2:1 in Geology and Geophysics and had been offered a job in Greenland with a survey team. They were so impressed with him that they have promised to name a feature after him and there may be a Luke Cotton mountain or river in due course.

Most of all, I was impressed by the dignity and spirit in adversity of Luke’s family (parents Nick & Steph and younger brother Eliot) and close friends. The funeral was a celebration of Luke’s life. The pallbearers were in Star Wars costumes, the hearse was a Landrover, dress was walking or climbing kit and afterwards we went for a BBQ at the sailing club in Kings Bromley, a favourite family spot. Please keep Luke’s family and many friends in your prayers as the reality of his loss deepens over time. I certainly will.

*Ted Green*

*Luke steering  
the B Marie*



# Memorial Book

Having the name of a loved one written in our Memorial Book is another way of remembering their life. The Book is kept in the case in the Prayer Corner and pages are turned twice a week, so that names are visible through the glass on the date nearest their death.

It costs £10 to insert a name. Please complete the form below and return it to a member of the Ministry Team with the remittance.

## Memorial Book

Name of Deceased (as you wish it to appear in the Memorial Book)	
Date of Death:	Age at Death:
Name of Contact (in case of any problems or queries)	
Telephone Number:	

Please make cheques payable to  
'PCC of St Michael and St Mary'



# *From the Registers*

<b>Baptisms</b>			
St John's	20th June 2021	Valentine John Venables	10 mths

<b>Weddings</b>			

<b>Funerals</b>			
St Michael's	26th June 21	Noreen Talbot	89
St John's	6th July 21	Nancy Wall	100
St John's	10th July 21	Margaret Cooke (interment of ashes)	96
St Michael's	16th July 21	Kathleen Hobson	84
St Michael's	19th July 21	Peter Woods	85
St Michael's	20th July 21	Ronald Bainbridge (interment of ashes)	94

# DATES FOR YOUR DIARY

**AUGUST 9<sup>TH</sup>**

MU Strawberry Tea @ St Michael's

**AUGUST 22<sup>ND</sup>**

CAMAS Trip

**NOVEMBER 9<sup>th</sup>**

Tuesday Club - **The Korean War**,  
speaker Ted Green



**LARGE COPIES** of the magazine are available on request

# And Finally...



A summer of fun.....or is it?

We usually think of summer as a time for relaxing and chilling, enjoying the warmer weather. We think particularly of children and young people enjoying carefree weeks of summer holidays, away from all the pressures of school or college life.

However, for many young people this can be a stressful time. Even without the usual pressures of exams, many are still waiting nervously for their GCSE, A level or other results, which can affect what they go on to do in the future. It is a time of great worry for some, but hopefully also a time of excitement and anticipation for the opportunities ahead. Those new opportunities also bring with them some anxieties about which choices to make.

For many younger children too, the summer is a time of that mix of apprehension and excitement, especially for those moving from primary to secondary school. Some will be keen to move to a larger school with new subjects to study, new teachers and buildings to get to know, and new friends to make. For others, however, all that can be pretty scary – leaving the safe atmosphere of primary school and venturing into the unknown.

For parents and carers too, this can be a stressful time, as they share in the concerns of their children as they move onto the next stage in their lives. I spent many years, as a teacher and as a Head of Year, sharing these emotions with carers and with students, whether new starters in Year 7 or those moving on at the other end of the school.

It is easy to think that all youngsters are carefree and have an easy life, but that is so often not the case. Perhaps this summer is a time for us

all to pray for young people and their families as they go through the next few months.

*Lord God, be with all those who are experiencing worry and uncertainty, especially the young. Be with those preparing to move schools, those awaiting results and those wondering what the future holds for them. Bless all families that they may feel your love and support.*

*Amen*

*Ruth Bull*

## **CORRECTION**

A correction to my ".....and Finally" in the July issue :-The grant figure which the Cathedral received should have read **£364,000 and NOT £164,000 as shown**, my apologies for the typo, **and again many thanks to the Cathedral and everyone involved for their hard work during the Covid pandemic**

## **ADVERTISING IN THIS MAGAZINE**

If you would like to advertise here, the prices per year are:

Full page	£280
Half Page	£150
Quarter Page	£85
Eighth Page	£50

Please contact the office  01543 262211

 office@stmichaelmaryjohn.org.uk

# P.J. NEVILLE MEMORIALS

Hand carved quality  
memorials. Renewals.  
Additional inscriptions.

House numbers.

Home visits and brochure at no  
extra cost.

Willow Court, Tamworth  
Road, Lichfield, Staffs.

WS14 9HD

Telephone and fax:

01543 263440

Our family would like to  
help your family.

We are an independent, family  
business from Lichfield.

At your service 24 hours.



House of Minster Funeral Home,  
26 Tamworth Street, Lichfield, WS13 6JJ

enquiries@jukesfuneralservices.com

www.jukesfuneralservices.com

01543 415050

## DECORATING BY JULIE

Your local  
lady  
decorator



Julie Parkinson

Home: (01543) 317258

Mobile: 07796268056

Email: [travellergirl2000@yahoo.co.uk](mailto:travellergirl2000@yahoo.co.uk)

## JUDY BARBER

FOOT HEALTH  
PRACTITIONER

since 2002

01543 416068

HOME VISITS AVAILABLE

Corns, callus,  
General foot care



ThreeSpires  
PHYSIOTHERAPY

## HOME VISIT PHYSIOTHERAPY

For ALL your physiotherapy needs, including:

- Post-Operative Rehabilitation
- Neurological Rehabilitation, for conditions such as Stroke
- Improving mobility and fitness
- Relief from Musculoskeletal injuries, such as back and neck pain



T: 07884 281623

E: [enquiries@threespiresphysiotherapy.co.uk](mailto:enquiries@threespiresphysiotherapy.co.uk)

[www.threespiresphysiotherapy.co.uk](http://www.threespiresphysiotherapy.co.uk)

# **CENTRAL GARAGE**

## **(LICHFIELD) LTD**

QUEEN STREET, LICHFIELD, STAFFORDSHIRE, WS13 6QD  
info@centralgaragelichfield.co.uk

A family run business established for over 75 years.  
We not only service your car, we can offer the following:

- **Quality Body Repair Work**
- **Engine Diagnostic Work**
- **MOT Testing Station**
- **Collection & Delivery Service**
- **Courtesy Cars**

## **FREE MINI VALET WITH EVERY SERVICE**



# **01543 262826**

# G. A. CANNELL MEMORIALS

*Individual designs & personal  
attention our speciality*

*Also : Memorial Revonvations and Repairs.  
FREE QUOTE*

*Home visits available at no extra charge - No oblication*

Visit our Showroom at: Curborough Hall  
Craft Farm, Water Lane, Lichfield Or  
Telephone: (01543) 256395  
Web: [www.cannellmemorials.co.uk](http://www.cannellmemorials.co.uk)

Open: Wed-Sun 10.30am-5pm



## The **co-operative** funeralcare

Locally owned by The Midcounties Co-operative

Our caring staff are here to listen and  
advise you, 24 hours a day, 7 days a week.

**- Funeral Pre-Payment Plans  
- Memorial Masonry**

1 Birmingham Road, Lichfield

Tel: 01543 416660

[www.coopfunerals.co.uk](http://www.coopfunerals.co.uk)



Would you like  
to reduce your  
household  
bills?

**UW** Utility  
Warehouse

Authorised UW Partner

Utility Warehouse could save you a huge amount of money every year. They provide gas, electricity, broadband, home and mobile phones.

Membership gives you access to the best value utility services in the UK with everything on one single monthly bill, and a host of money-saving member benefits.

As well as savings on your household services, membership gives you access to lots of other benefits.

If you would like to save money, contact me for more information.

Frazer Sneddon, Lichfield

**Frazer & Ruth Sneddon**

Authorised UW Partner

+447974122710

[frazer.and.ruth@uw.partners](mailto:frazer.and.ruth@uw.partners)

Web Site : [uw.partners/frazer.and.ruth](http://uw.partners/frazer.and.ruth)

## FLOODLIGHTING

Sponsor St Michael's floodlights to mark a special occasion or remember a loved one!

Your donation will brighten up the skies over Lichfield for the night.

Contact the United Benefice Office on 01543 262211



# Who's Who

<p style="text-align: center;"><b>St Michaels PCC</b></p> <p><b>Churchwardens:</b> <i>Lyn Shiel 320437</i> <i>Sue Jones 415242</i></p> <p><b>Assistant Wardens:</b> <i>June Frayn 264920</i> <i>Liz Clarke 268862</i> <i>David Easton 255308</i> <i>Brenda Liptrot 251863</i></p> <p><b>Treasurer:</b> <i>Viv Oliver 258054</i></p> <p><b>PCC Secretary:</b> <i>Phil Clayton 682141</i></p> <p><b>Stewardship Recorder:</b> <i>Sandy Baker 256320</i></p> <p><b>Electoral Roll Officer:</b> <i>Mike Godfrey 264255</i></p>	<p style="text-align: center;"><b>St John's PCC</b></p> <p><b>Churchwardens:</b> Christine Higgs 410351 John Alsop 480240</p> <p><b>Assistant Churchwarden:</b> Linda Rubisch 481294</p> <p><b>Treasurer:</b> Paul Wright 01543 483230</p> <p><b>PCC Secretary:</b> Christine Higgs 410351</p> <p><b>Assistant Treasurer</b> Linda Rubisch 481294</p> <p><b>PCC Lay Vice Chair:</b> Christine Higgs 410351</p> <p><b>Electoral Roll:</b> Angie King <a href="mailto:office@stmichaelmaryjohn.org.uk">office@stmichaelmaryjohn.org.uk</a></p>
<p style="text-align: center;"><b>St Michael's Church</b></p> <p><b>Verger:</b> <i>Lynn Rock 252634 or 07765 312411</i></p> <p><b>Sacristan and Head Server:</b> <i>Maggie Easton 255308</i></p> <p><b>Organist and Choirmaster:</b> <i>Dudley Ray 07847 643373 <a href="mailto:dudleyrayuk@yahoo.co.uk">dudleyrayuk@yahoo.co.uk</a></i></p> <p><b>Music Group:</b> <i>Richard Brooks 07918 906 350</i></p> <p><b>Transport Rota:</b> <i>Brenda Liptrot 251863</i></p> <p><b>Pastoral Care:</b> <i>June Frayn 264920</i></p> <p><b>Flowers:</b> <i>Brenda Liptrot 251863</i></p> <p><b>Safeguarding:</b> <i>Maureen Brand 264880</i></p> <p><b>Junior Praise:</b> <i>Viv Oliver 258054</i></p> <p><b>Bell ringers:</b> <i>Gillian Eastwood 07568134115</i> Thursdays, 7:30pm to 8:55pm. <a href="mailto:gillieastwood@gmail.com">gillieastwood@gmail.com</a></p> <p><b>Mothers Union:</b> <i>Elizabeth Allen 304938</i></p> <p><b>Social Team:</b> <i>Contact via the office 262211</i></p>	<p style="text-align: center;"><b>St John's Church, Wall</b></p> <p><b>Verger:</b> Hilary Barker 01543 482027</p> <p><b>Pastoral Care:</b> Christine Gilbert 07369 245023</p> <p><b>Safeguarding:</b> Maureen Brand 264880</p> <hr/> <p style="text-align: center;"><b>Other Useful Numbers</b></p> <p><b>St Michael's School:</b> 227425</p> <hr/> <p style="text-align: center;"><b>Parish Magazine</b></p> <p><b>Magazine Distributor:</b> <i>Barbara Homewood 255909</i> E-mail <a href="mailto:brian@britcave.co.uk">brian@britcave.co.uk</a></p> <p><b>Magazine Editor:</b> <i>David Shiel 01543320437</i> <a href="mailto:shiefamily@gmail.com">shiefamily@gmail.com</a></p>
<p style="text-align: center;"><b>Scouting and Guiding</b></p> <p><b>Group Scout Leader</b> Carl Hall 07988 685378 <a href="mailto:chair@7thlichfield.org.uk">chair@7thlichfield.org.uk</a></p> <p><b>Rainbows:</b> <i>Becky Bickley 07703 671568</i> <i>Vicki Davies Friend 07970 549284</i> <i>Hannah Heath 07854 824443</i></p> <p><b>Brownies:</b> <i>Julie Cragg 301098</i></p> <p><b>Guides:</b> <i>Lisa Webb 07900 164587</i></p>	



