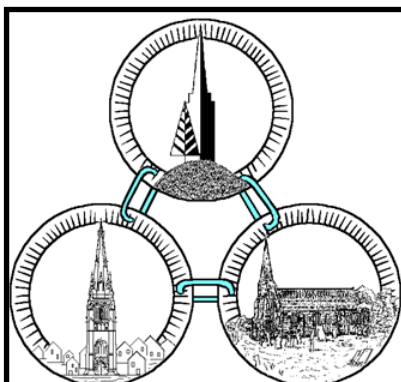


# THE PARISH MAGAZINE

## April 2018



St George's Day—23rd April 2018



**The United Benefice of  
St Michael Lichfield,  
with St John, Wall**

**75p**

<b>Rector:</b> <b>The Venerable Simon Baker, Archdeacon of Lichfield</b>  10 Mawgan Drive, Lichfield, Staffs, WS14 9SD. Tel: 01543 416232  E-Mail: <a href="mailto:simonbaker57@outlook.com">simonbaker57@outlook.com</a>  Day Off: Friday	<b>Associate Minister (<i>Part-time</i>):</b> <b>The Revd. Linda Collins</b>  17, Leyfields, Lichfield, Staffs, WS13 7NJ. Tel: 07915 091128  E-mail: <a href="mailto:lindacollins@hotmail.co.uk">lindacollins@hotmail.co.uk</a>  Days: Sunday, Monday, Tuesday, Wednesday
<b>Associate Minister (<i>NSM Part-time</i>):</b> <b>The Revd. Ruth Bull</b>  36 Broadlands Rise, LICHFIELD, Staffs, WS14 9SF E-mail: <a href="mailto:dkbrlcb@hotmail.com">dkbrlcb@hotmail.com</a>	<b>Assistant Minister (NSM)</b> <b>The Revd. Jeyan Anketell</b>  7 Wissage Lane, LICHFIELD, Staffs, WS13 6DQ
<b>Assistant Minister (NSM)</b> <b>The Revd. Dr. Stephen Barton</b>  The Master's House, St John's Hospital, St John Street, LICHFIELD WS13 6PB E-mail: <a href="mailto:stephen@the-bartons.com">stephen@the-bartons.com</a>	<b>Reader: Lesley Allen</b>  21 Boley Close, LICHFIELD, Staffs, WS14 9AR Tel: 01543 251654 E-mail: <a href="mailto:lesley.allen21@googlemail.com">lesley.allen21@googlemail.com</a>
<b>Reader: Phil Clayton</b>  Glenridding, 7 Thacker Drive, Lichfield, Staffs, WS13 6NS Tel: 01543 263244 E-mail: <a href="mailto:phil@philclayton.net">phil@philclayton.net</a>	<b>Reader: Dr Trevor James</b>  36 Heritage Court, LICHFIELD, Staffs, WS14 9ST Tel: 01543 258434
<b>Reader: Peter Salt</b>  7 Redlock Field, Lichfield WS14 OAB Tel: 01543 250723 E-mail: <a href="mailto:peter.salt@btinternet.com">peter.salt@btinternet.com</a>	<b>Reader: Alan Toplis</b>  Streethay Lodge, Streethay, LICHFIELD, Staffs, WS13 8LR Tel: 01543 414651 E-mail: <a href="mailto:alan.toplis@toplis.co.uk">alan.toplis@toplis.co.uk</a>
<b>St Michael's Church</b> Church Street, Lichfield, Staffordshire, WS13 6ED	<b>St John's Church</b> Green Lane, Wall, Staffordshire, WS14 0AS

## United Benefice Office

St Michael's Church, Church Street, LICHFIELD, Staffs, WS13 6ED

Mon, Tues, Wed & Fri **CLOSED** Thursdays

9.00 am to 12.00 noon.

Tel: 01543 262211

E-mail: [office@stmichaelmaryjohn.org.uk](mailto:office@stmichaelmaryjohn.org.uk)

# Reflections for April

I wish you all a very happy Easter as we celebrate the joyful resurrection of our Lord Jesus Christ.

We can only imagine the shock of Jesus' disciples, men and women, at the arrest, summary trial and crucifixion of Jesus. They must have been stunned and deeply disturbed to see the way the crowd turned from adulation to condemnation, with the encouragement that gave to those who wanted to do away with him.

It is Jesus' female followers who come to the tomb early in the morning and see the stone rolled away. And it is Mary, according to the gospel writer John, who first sees the risen Jesus, though she assumes he must be the gardener. Such is the extraordinary nature of this event that it does not accord easily with our everyday human experience. We do not expect to see again those we have lost, either by the graveside or in the privacy of an upper room. Later that day, according to Luke, a couple of disciples walking to Emmaus, overshadowed by the dreadful things they have experienced, walk alongside the risen Jesus as he talks to them – and they do not notice who it is who accompanies them. They only realise that it is Jesus when he breaks bread with them at their evening meal – as he must have done so many times during the years of his ministry.

Many aspects of the story of the first Easter are mysterious and difficult to pin down. It's not surprising really because this is not normal human experience, it is extraordinary and new and in its own way just as much a shock as the death itself.

If the events are difficult to describe or explain (and many have tried) what is clear is the effect of what happened and the way in which the appearances of the risen Jesus changed the lives of the disciples for

ever. From being shocked and wanting to hide away, they became bolder and wanted to share with each other and then with more and more people the extraordinary thing that God had done. If the resurrection was new life for Jesus then it was also new life for his followers and showed them that what Jesus had shared and taught during his life was truly from God. More than that God had acted in such a way that even death itself was now no threat to life in fellowship with God.

The power of Easter and the resurrection is difficult to underestimate – it literally changed the world and changes us still. Those who believe that God can do such a thing cannot see the world or their own lives in the same way as others see them.

I hope and pray that through our celebration of Easter this year you will be able to experience afresh what God is doing and see yourself and the world in a different way.

This year for the first time we will be celebrating the resurrection in a dawn service on Easter morning. We gather at St Michael's church on Greenhill at 6.00am just as the sun is rising to light the Easter fire, greet the risen Jesus and praise God for all that he has done to bring new life into our world. Bishop Michael, the Bishop of Lichfield will be leading our service. All are welcome to what will be a moving and uplifting service.

Simon Baker

Rector

**The Churches Together in  
Lichfield**

**Good Friday Evening  
Meditation**

**Friday 30th March, 7.30pm  
in Lichfield Cathedral**

This year's evening service will be led by St  
Michael on Greenhill church and its  
Combined Choirs.

It is entitled **The Way of the Cross**, based  
on the RSCM Passiontide sequence, and is  
in seven parts. Each part will include a  
reading, an anthem and prayers. Anthem  
composers include Gibbons, Stainer and  
Elgar and there will also be congregational  
hymns.

Everyone is welcome - please come along.

# The Bishop of Wolverhampton's pastoral letter for March 2018

The theme of this year's Holocaust Memorial Day commemoration was 'The Power of Words'. We were encouraged to reflect on words as a channel for perpetrating evil, as a means of articulating protest and as a way of recording testimony. Part of the enduring reason for the shadow that the Nazi Holocaust continues to cast over our world is the amount of written documentation that we have from that time. The countless examples of German propaganda depicting the Jews and other minorities as sub human, and the chilling edicts ordering their persecution. The luminous courage that shines from the writings of such as Dietrich Bonhoeffer, incarcerated for conscientiously objecting to evil. The incomparable power of the personal testimony, as in the Diary of Anne Frank.



Even when the last person with direct experience of the Second World War has passed away, the power of words will ensure that the truth of what happened in the Holocaust is never forgotten.

But what happens if words are suppressed or their power is in other ways undermined?

The recent film 'The Post' is all about the power of words. It tells the story of the attempts by the New York Times and the Washington Post to reveal the truth about successive US administrations' attempts to

cover up what was really happening in the conflict in Vietnam. The film dramatizes the conflict between press and president, between the right of the newspapers to publish and the right of the State to suppress.

The events described took place nearly fifty years ago and one of the striking differences between then and now is the authority of the newspaper. In that era, the written word that rolled off the presses conveyed huge authority. Newspapers had massive circulations. No wonder the president would want to do everything in his power to stop publication.

We live in a very different world. Words are flung at us from all directions but a diminishing number come via printed newspapers. More and more, people's views are being formed via online and social media platforms and as we are becoming all too aware, the danger is that authoritative news and fake news become indistinguishable. I recently clicked on a FaceBook link which purported to carry a news story about the death of a famous celebrity. In fact the link was a portal through which someone tried to hack my computer.

The journey that Christians follow through Lent leaves us in no doubt as to the power of words, for good and evil. On Palm Sunday we are reminded of the crowd, baying for blood, like modern day social media trolls; 'Crucify Him, Crucify Him'. On Good Friday we recall Jesus' words from the cross, words which have set countless people free from hatred and bitterness, 'Father forgive them for they know not what they do'.

More than ever, in an age where words are becoming cheap, expendable and untrustworthy, there is hunger for a Word which is authoritative, dependable and life-giving. As Christians, we are the bearers of the Word. We carry ultimate responsibility for the power that the Word conveys. During Lent we often focus on hearing and reading instructive words, to help us deepen our spirituality and nurture our

faith. It might be an equally important discipline to monitor our social media accounts for the words that we are actually speaking, in a variety of forms. Are they words that could come back to haunt us, as words suspended in timeless limbo on the web always have the power to do? Or are our words ones that could stand forever, as testimony to the faith we hold and the Word we live to share.

*+Clive Wulfrun*

*March 2018*

---

## **Parish Surgery**

For Baptisms, Banns and Weddings, staff are available at the Parish Office in St Michael's Church, Church Street on the 1<sup>st</sup> and 3<sup>rd</sup> Monday evenings in the month by appointment only.

Please telephone 01543 262211 or email [office@stmichaelmaryjohn.org.uk](mailto:office@stmichaelmaryjohn.org.uk) to make an appointment.

## **Magazine Subscriptions**

At the end of our annual collection of subscriptions there is always someone we are unable to contact - either because of illness, holidays or inability to answer the door. You can still subscribe by sending a cheque payable to P.C.C. of St. Michaels and St. Marys for £7.50 to 2 Wightman Close Lichfield WS14 9RR

Many thanks to those who persevere to collect subscriptions at this time of the year. *Barbara Homewood 255909*



# CHILDREN'S SERVICES & ACTIVITIES

## First Steps



**NO MEETING IN APRIL**

**Monday 14th May**

**10am St Michael's**

## Family Praise

**Sunday 8th April**

**10am St Michael's**



Come and join us at our ...

## MESSY CHURCH

for craft, story, song and food on



**NO MEETING IN APRIL**

**Sunday 20th May**

**4.30 – 5.45pm**

**in St Michael's Church Hall**

**Ages 0-11 yrs. welcome**

## **DIOCESE OF LICHFIELD PRAYER DIARY**

<https://www.lichfield.anglican.org/documents/category/prayer-diary/>

### **Prayer for the Week: March 31st 2018—Holy Saturday**

Risen Lord, you walk through this earth using the feet of very imperfect disciples; may every race and generation take time to look up and see you, draw nearer, listen and worship, and turn to follow you.

**Amen**

*(Australia; WCC 1989)*

## **Deadlines!**

### **Magazine:**

Usually 2<sup>nd</sup> Sunday every Month.

Contact David Bull

### **Pew Sheet:**

7:30am every Thursday Morning.

Contact Parish Office

# Regular Services and Worship in the Benefice

## Regular Services at St Michael's Sundays

8:00am Holy Communion  
10:00am Holy Communion

### 2<sup>nd</sup> Sunday

10:00am Family Praise

## Other Services at St Michael's Sundays

1<sup>st</sup> Sunday 12:30pm

Holy Baptism

2<sup>nd</sup> Sunday 6:00pm

Holy Communion

3<sup>rd</sup> Sunday 4:30pm Church Hall

Messy Church

4<sup>th</sup> Sunday 6:00pm

Choral Evensong

### Tuesday

School Service

### Wednesday

9:30am Holy Communion

## Regular Services at St John's

### Sundays @ 10am

1<sup>st</sup> Sunday - Holy Communion

2<sup>nd</sup> Sunday - Holy Communion

3<sup>rd</sup> Sunday - Morning Prayer

4<sup>th</sup> Sunday - Holy Communion

5<sup>th</sup> Sunday - Wall Praise

### Baptism @ 11.30am

4th Sunday

## Music in the Benefice

St Michael's Church

### Wednesdays

6.30pm Girls Choir

7.15pm Other parts &  
St Michael's Singers

### Monday before 2<sup>nd</sup> Sunday

7:30pm Music Group

## Prayer Group, St Michael's

1st Wednesday of the month

Contact June Frayn (264920)

Brenda Liptrot (251863)



## Bells Practice

Every Thurs 7:30pm, St Michael's

## Parish Surgery

Every 1<sup>st</sup> and 3<sup>rd</sup> Monday by Appointment from 6:30pm at the Parish office in St Michael's Church. Please call 01543 262211

## Baptism

**Preparation** First Tuesday at  
8:00pm at St Michael's

## **Mother's Union April 2018**

This year our Lent Meditation was led by Rev. Vic Morris, husband of one of our members and assistant to Rev. Debra Dyson at Wiggington. He had prepared a Taize` style service with readings, prayers and choruses which was much appreciated.

A few days later, despite the heavy snow we were able to provide our traditional Lent lunch and were pleased to see so many of the congregation and friends attending. It really was the weather for hot soup and tea. Congratulations to the soup-makers and the snow-shifters. £154 was raised for M.U. charities.

A group of members led by June spent an afternoon making posies for Mothering Sunday.

At our most recent meeting we heard an interesting and fascinating talk by Julie Baker who is one of the midwives in the maternity unit at Samuel Johnson Hospital. This is one of only 44 local midwife-led units in the country where women receive ante and post-natal care as well as giving birth. The atmosphere is calm, quiet and unhurried with a minimum of intervention, thus mirroring scenes on T.V. in "Call the Midwife". Apparently, this programme is highly rated by present day midwives.

The name midwife means "with woman" and in 1700 she had to be "not too fat, considerate and patient". Kings College, London began training midwives in 1862 and the Royal College of Midwives was founded in 1881. To avoid payment many women still relied on a friend to help until the N.H.S. was founded in 1946 and all treatment was free but soon hospital deliveries were encouraged with doctors attending and (in the opinion of some midwives) interfering and

trying to hurry and direct women unnecessarily.

Nowadays many women delay pregnancy and so there can be complications. As a last resort they turn to I.V.F. which can lead to multiple births when it is successful. They fear pain and want drugs or Caesarean sections and many are overweight which can cause problems. This is all costing the N.H.S. a lot. Midwife-led units are under threat, yet they can provide more understanding and guidance to the women which eventually leads to happier and more natural births. Our own local unit was under threat not long ago and may well be again. It is worth giving them our support.

*Betty Lyne*



# WOMEN'S WORLD DAY OF PRAYER

March 2<sup>nd</sup> was the Women's World Day of Prayer. Services in Lichfield were to be held at the Life Church, Netherstowe. When representatives from the various churches in Lichfield started to plan the services last autumn, prepared by women in Suriname, they little thought that snowy weather might cause problems. After various emails were exchanged it was decided to go ahead with the morning service. There were problems with the boiler at the Life Church, but there was a warm welcome with hot drinks.

The theme of the service was "All God's Creation is Very Good". Through readings, hymns, information about Suriname, prayers, meditations and pictures, our thoughts were directed as to how we might be less wasteful and recycle items.

Most memorable were ladies dressed in the costumes of Suriname and objects being unwrapped, litter dropped and later being collected and put into recycle bins. After studying suggestions as to how we can make changes in our lives we wrote in the outline of a turtle, one idea we could adopt, and change our habits. (I hope to have the full list of suggestions at a later date.)

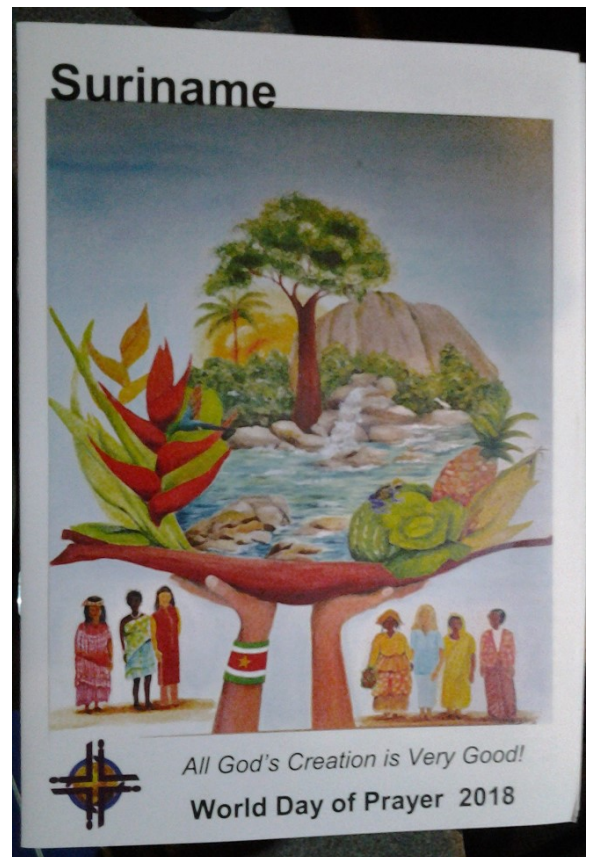
Cathy Lamb's "The Ladies who Lark" choir from the Cathedral led the singing, and the service finished with refreshments. About 60 people braved the elements but it was thought best to cancel the evening service.

The Women's World Day of Prayer is well worth attending. The services next year will be on the first Friday in March and will be held at either Holy Cross or St Peter's and St Paul's. It will be prepared by women in Slovenia, so do try to keep the date free.

Alison James



Caroline and Ted Green were able to attend a WWDP service at St Augustine's Church in Lynwood, Perth, Western Australia, where the congregation included four nuns of Indian and African descent from Mother Teresa's Missionaries of Charity. Caroline said that it was very moving to know that we were taking part in the same service, written by the women of Suriname, as our friends in Lichfield.



# St. Michael's Churchyard

The St. Michael's Churchyard Working Party have been working each month since October, 2017, clearing overgrown areas of the Churchyard. This has involved the removal of brambles, holly and other tree seedlings and taking out ivy, especially from headstones. We have cleared the area around the Chancellor Law Monument, making this more attractive and visible.



We have discovered hidden gravestones and it has been good to see so many bulbs and other wild flowers appear. The Community Payback Team have also assisted us in this work and they have cleared pathways, making them safer.

Our next Working Party Session is on **Saturday April 14th., from 10.00 a.m. to 1.00 p.m.** Join us if you can for an enjoyable morning's work-tea/coffee and cake are provided during our Refreshment Break.

Ray Allen 01543 251654

*Ray Allen 251654*



# NEXT STOP SYMI

We are very pleased to announce that on **Tuesday 10th April** at 2 o'clock in St Michael's Hall we will be offering refreshments followed by a talk and photographs from Phillip Flagg at 2.30pm.

Phillip is a founder member of Symi charity, who regularly takes the van to Symi. He will talk about the needs of refugees and what the charity is doing to address them with the aid of churches such as ourselves.

**Please save the date**



## FLOODLIGHTING

Sponsor St Michael's floodlights to mark a special occasion or remember a loved one!

Your donation will brighten up the skies over Lichfield for the night.

**Contact the United Benefice Office**  
**on 01543 262211**



## 'SACRED'

What is 'SACRED'. It stands for

Simply

A

Chapter

Read

Each

Day.



A small group of us from the United Benefice have been using the books written by Rev. Phil Moon to lead us in reading the Bible through in a period of three years. We have found that this goal is



BIBLE STUDY NOTES  
*'simply a chapter read each day'*

Volume 1

achievable and that the notes in the SACRED books have been helpful and Illuminating. Denise led a 'Book Club' style discussion every month and we are continuing in her footsteps!

Last month we discussed Acts, Ezra and the Song of Songs as well as a few Psalms. We discovered things about Paul which we had not thought about before. We first met him as a young man, born of Jewish parents but also a Roman citizen,

a privilege which stood him in good stead in later life. He was educated by a famous Rabbi of the day, Gamaliel, and was passionate about what he believed. We all know about his conversion after the execu-

tion of Stephen. We discovered that he was an intrepid traveller and sailor as he established churches throughout Asia Minor, Greece and Italy over a period of about 30 years. He was a man of deep feeling as we found when his friends tried to persuade him not to go to Jerusalem – it was too dangerous. He said, *‘What do you mean by weeping and breaking my heart?’*

Ezra covered the subject of intermarriage. Why were genealogies so important in the Bible? Why was it so important not to marry foreign men or women? After all, Ruth, the grandmother of King David, was a foreigner. She had however adopted the religion of her mother in law. After her husband had died she refused to leave Naomi with the famous words *‘Where you go I will go, and where you stay I will stay. Your people will be my people and your God, my God.’*

If you haven’t read the Song of Songs I can recommend it! It is a beautiful poem about love and the poetry comes across even in the English translation. Again some of its words may be familiar: *‘My beloved is mine and I am his’*.

At the end of next month we shall be discussing Paul’s letter to the Ephesians, to Timothy and the book of the prophet Zechariah! Why not join us?

*Christine Higgs*

# ***St. Michael's Film Club***

## **1. Paddington 2**

*(Cert PG. 99 min. Comedy 2017.)*

The continuing saga of the bear from deepest, darkest Peru! Stars Brendan Gleeson, Hugh Grant, Julie Walters, Jim Broadbent.

**Monday APRIL 9TH.**

Refreshments £2.50 from 1.00pm.

St. Michael's Church Hall  
(behind Aldi). All welcome.

Contact: Parish Office 01543 262211

## **2. A Dog's Purpose**

*(Cert PG. 100 min. Comedy 2017.)*

A dog looks to discover his purpose in life over the course of several owners.

**Monday 14<sup>TH</sup> MAY**

**1.30pm start**

# GIFTED



Mary is a 7 year old mathematics genius who lives with her uncle and guardian, Frank. Mary's mother, Diane, committed suicide when Mary was six months old. Diane especially wanted Mary to live with Frank, who was once a professor, but is now a boat repairer and has a rather bohemian lifestyle.

Frank's estranged mother, Evelyn, also a talented mathematician and a rather cold intellectual, seeks to gain custody of Mary and wishes her to devote her life to mathematics. She believes that her daughter, Diane, who was dedicated to solving the Navier-Stokes equations never managed to do this. Frank turns down a scholarship from a school for gifted children because he wants Mary to be a normal child, but she is not challenged enough at this school. Frank is worried that the judge will rule against him and he will lose Mary, so he decides to place Mary in foster care. Mary's school teacher sees a picture of Mary's beloved cat, Fred, who has been put up for adoption due to allergy issues. Frank realises that Evelyn, who is allergic to cats, has been overseeing Mary's education at the foster parent's guest house. Mary has not been happy in this indifferent social and emotional environment.

Frank reveals that Diane did solve the N-S problem but did not want it published until after her mother's death. He offers to publish Diane's work if Evelyn drops her objection to his having custody.

This is a charming film showing how unhappy Mary was when adults interfered with her life. She needed the challenge of exacting maths problems but craved the love and warmth of her uncle and best friend neighbour Roberta. She also wanted the friendship and fun with children of her own age. Mary returns to live with Frank and attends a public school while taking college-level courses in the morning.

***Alison Anketell***



## United Benefice Walking Group

Our walk in February took us to Handsacre and Armitage on Saturday 24th February. It was very well attended.. Although the weather was cold, it was a sunny winters day. Everyone was wrapped up well as we



all set off for a walk along the Trent and Mersey canal to St John' the Baptist's church in Armitage. On the way we walked under 2 Grade II listed bridges and the back of the Armitage Shanks factory.

The church is open daily, so we all had a sit down and a look around the church. The font was the oldest part of the church, dating from the 12th century. Everyone was amazed to find out that the pews had come from St Mary's Church in Lichfield. The churchyard has an area of Special Biological interest because it has ancient meadow flora.

We made our way back to The Olde Peculiar pub for coffee and then went for a short walk around the village before going back for our lunch. Everyone thoroughly enjoyed their meal and their day out.

We invite you to join us for our April Walk. This will be a **Springtime Walk here in Lichfield.**

Please make your way to **SPEAKER'S CORNER, next to Minster Pool at 10.00 A.M. on SATURDAY APRIL 28th.** Please Note the unusual meeting point for the start of the walk.

The theme of this walk will be Springtime Trees and Flowers in



Lichfield.

Before coffee we will be going on a tree trail, looking at some of the very interesting trees to be seen in **The Garden of Remembrance and in Beacon Park.**

Following this we will have coffee at **The Beacon Park Bistro**, where seats will be reserved for us.

After coffee, we continue our walk, first of all making our way to **Pipe Green, Lichfield's Hidden Gem**, where there should be a good selection of Spring Wild Flowers to see. We then make our way to **Leomansley Woods**, where hopefully, the bluebells will be out in all their splendour. We then go back to the Park and look at The Woodland, before walking to **The King's Head pub for lunch.** Again, we will have reserved seating. This will be in the Courtyard, weather permitting.



A good variety of meals is available to choose from at The King's Head and we shall make our choices at Speaker's Corner before the start of the walk.

The walk is about **3 miles long**. It is completely flat, with no stiles and should be mostly dry with a little mud in parts of Leomansley Wood.

Lunch should be over by 2.30 p.m.

Join us if you can for this 'Countryside Walk' in our City of Lichfield.

*Ray Allen 01543 251654*



## LICHFIELD WILDLIFE GROUP

Annual General Meeting followed by a talk: 'Flowers & Landscapes of the Canadian Rockies' by Dr Peter Coxhead.

**At** Wade Street church

Frog Lane,

Lichfield

WS13 6HL

**On** Monday 9th April

**At** 7:45.

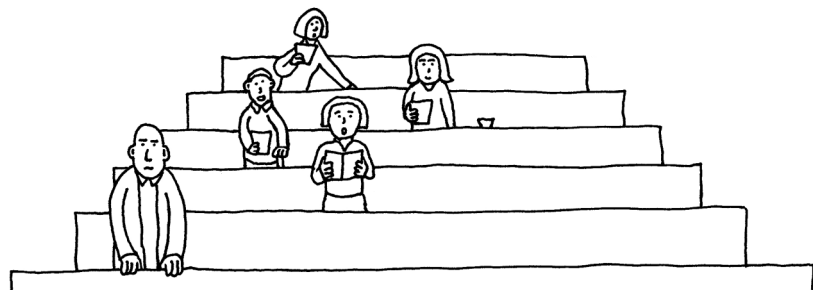
Admission £3:00, under 16 free.

*Peter Norbury (Programme Secretary)*

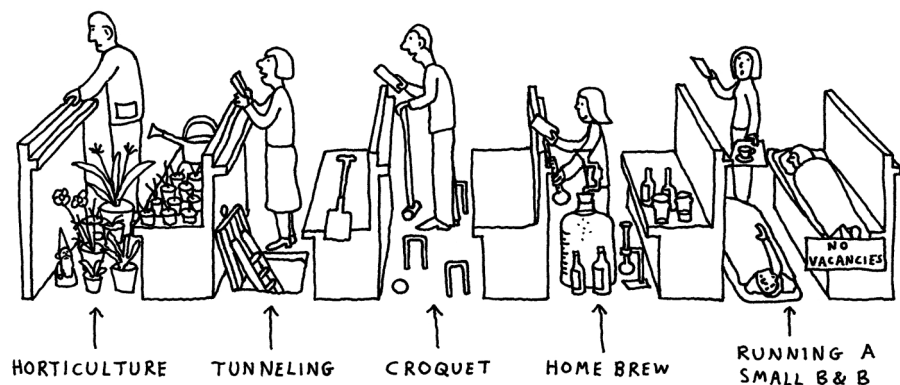
## IN THE PEWS

WHAT IS GOING ON?

WHAT THE  
VICAR SEES



ACTUAL  
ACTIVITIES



Cartoonchurch.com





## Do you have Type 2 diabetes or know someone who has?

The NHS is undertaking a nationwide education programme for people who have been diagnosed with Type 2 diabetes. They are keen to make contact with such people to help them to develop their skills in managing their condition.

*My Diabetes* is a 90 minute introductory session to let people know what support is available.

If you would like to find out more about this, or book one of these sessions, call Lucy on 01889 572029.



# St George – Patron Saint of England

by Ben Johnson

from <http://www.historic-uk.com/HistoryUK/HistoryofEngland/St-George-Patron-Saint-of-England/>

Every nation has its own 'Patron Saint' who in times of great peril is called upon to help save the country from its enemies. St David is the patron saint of Wales, St Andrew of Scotland and St Patrick of Ireland – St

George being the patron saint of England.

But who was St. George, and what did he do to become England's Patron Saint?

Very little is known about St. George's life, but it is thought he was a high ranking officer in the Roman army who was killed in around AD 303.

It seems that the Emperor Diocletian had St. George tortured to make him deny his faith in Christ. However, despite some of the most terrible torture even for that time, St George showed incredible courage and faith and was finally beheaded near Lydda in Palestine. His head was later taken to Rome where it was interred in the church dedicated to him.

Stories of his strength and courage soon spread throughout Europe. The best-known story about St. George is his fight with a dragon, but it is highly unlikely that he ever fought a dragon, and even more unlikely that he ever visited England, however his name was known there as early as the eighth-century.



In the Middle Ages the dragon was commonly used to represent the Devil. Unfortunately, the many legends connected with St. George's name are fictitious, and the slaying of the 'Dragon' was first credited to him in the 12th century.

St. George, so the story goes, killed a dragon on the flat topped Dragon Hill in Uffington, Berkshire, and it is said that no grass grows where the dragon's blood trickled down!

It was probably the 12th century Crusaders however who first invoked his name as an aid in battle.

King Edward III made him the Patron Saint of England when he formed the Order of the Garter in St. George's name in 1350, and the cult of the Saint was further advanced by King Henry V, at the battle of Agincourt in northern France.

Shakespeare made sure that nobody would forget St. George and has King Henry V finishing his pre-battle speech with the famous phrase, 'Cry God for Harry, England and St. George!'

King Henry himself, who was both warlike and devout, was thought by his followers to possess many of the saint's characteristics.



In England St. George's Day is celebrated, and his flag flown, on his feast day, April 23rd.

An interesting piece of trivia – Shakespeare was born on St. George's Day 1564, and if the story is to be believed, died on St. George's Day 1616.

An appropriate end perhaps for the man who helped to immortalise the Saint in English tradition.

*The Tomb of St George, Lod, Israel*

# TUESDAY CLUB LECTURES

***TUESDAY 10th April 2018***



**SPEAKER:**  
Phillip Flagg,  
one of the founder  
members of  
Next Stop Symi.

COMMENCING AT **2.30PM** FOR APPROX ONE HOUR

**EVERYONE WELCOME**

**ENTRY FEE £3.00 PER PERSON ON THE DOOR**  
**REFRESHMENTS AVAILABLE**

**VENUE:**

# **St Michael's Church Hall**

**PROCEEDS TO ST MICHAEL'S CHURCH FUNDS**

# WALL NEWS

## Knowle Lodge Open garden

The two dates for this year's Open Garden at Knowle Lodge are

**Sunday April 8th 1pm - 5pm and Sunday May 20th 1pm - 5pm**

Once again we have been asked to assist with the afternoon's fund raising event by providing the refreshments of tea and cakes.

Therefore can I once again make the request for cakes on the day. Also help is always needed to help with serving the teas and cakes, washing up, collection of cups and plates.

Please phone Hilary on 01543 480220 if you can help in any way.

## Ramblings April 2018

April Fools' Day! I can't help remembering the year – probably a long time ago now! - when there was a news item



on TV about the harvesting of spaghetti, complete with pictures of the spaghetti pickers. I probably took it all in, being of a somewhat gullible



nature! I was not the only one - evidently the BBC was flooded with requests to purchase a spaghetti plant! In recent months fake news has become an issue and we have to be wise in interpreting what we see and hear!

During Holy Week we thought about the last days of Jesus' life leading up to Good Friday when Jesus was crucified and darkness fell over the land. We joined together in the celebration of Easter morning when the light of the resurrection overcame the darkness of sin and death. Easter is a reminder that we are now children of the light as Paul wrote in his letter to the Ephesians 5:8. Our lives should reflect the light and Paul encourages his readers to be careful how they live, to be wise, making the most of every opportunity, not to be foolish, but to understand what the Lord's will is. The word 'foolish' can be translated as witless, or brainless! So let us keep our wits about us and live in the light of Christ!

## **Lent Study Course 2018**

I have thoroughly enjoyed the Lent Study Course held at St Michaels Church during Lent. On Monday 19<sup>th</sup> February the topic was 'Grave Talk' led by Rev. Linda Collins. Small groups were handed cards with headings for discussion. Our group was handed one with the heading '**What do you think about lighting a candle to remember someone?**

It surprised me how much discussion went on regarding the subject. In fact we could not move off the subject on to the next. The outcome for those from St Johns, Wall was that we would very much welcome some discussion regarding this idea. Could a Candle tray be introduced at Church ? Where would it be placed? When would it be most used? Following discussion maybe it could be taken to the PCC for further discussion and possibly a way forward. I would therefore be interested in the thoughts of the congregation . Please feel free to talk over the idea and talk to the Church Wardens and Verger.

*Hilary Barker*

## **Signs of Spring at St John's**

The snowdrops and daffodil bulbs that Denise planted have all come into flower. It must be spring, even if the snow didn't realise it on Sunday 18th March when the service was cancelled!!



# Bible Readings

**Sunday 1st April**

**Easter Sunday**

**[Gold or White]**

Acts 10.34-43

John 20.1-18

**Sunday 8th April**

**2nd Sunday of Easter**

**[White]**

Acts 4.32-35

John 20.19-end

**Sunday 15th April**

**3rd Sunday of Easter**

**[White]**

Acts 3.12-19

Luke 24.36b-48

**Sunday 22nd April**

**4th Sunday of Easter**

**[White]**

Acts 4.5-12

John 10.11-18

**Sunday 22nd April**

**EVENSONG**

**4th Sunday of Easter**

**[White]**

Exodus 16.4-15

Revelation 2.12-17

**Sunday 29th April**

**2nd Sunday of Easter**

**[White]**

Acts 8.26-end

John 15.1-8

**Sunday 6th May**

**6th Sunday of Easter**

**[White]**

Acts 10.44-end

John 15.9-17

**Thursday 10th May**

**Ascension Day**

**[Gold or White]**

Acts 1.1-11

Luke 24-44

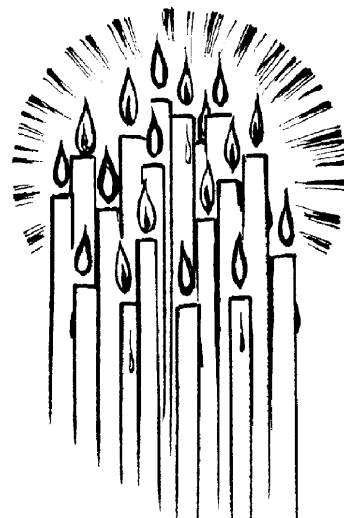
**Sunday 13th May**

**7th Sunday of Easter**

**[White]**

Acts 1.15-17, 21-end

John 17.6-19





# From the Registers



## Baptism

St John's	25th Feb	Aaron Nathaniel Trueman	8 mths
St. Michael's	4th March	Millie Jayne Cressey	12 mths



## Wedding

--	--	--



## At Rest

St Michael's	19th Feb	Olive Smith	97
St Michael's	23rd Feb	Beryl Alty	
St Michael's	5th March	Kenneth Richmond	87
St Michael's	6th March	Dr Victoria Dumbill	43
St Michael's	14th March	Edward 'John' Barlow	82

# St Michael's Rota – April 2018

8.00 am St Michael's	1 April	8 April	15 April	22 April	29 April
<b>Sidesperson</b>	Martin Dewes	David Bull	Sandy Baker	Brian Smith	Martin Dewes

10.00 am St Michael's	1 April Easter Sunday	8 April Family Praise	15 April	22 April	29 April
<b>Welcomers</b>	Mary and Robert McAllester Jones	Pat Toplis	Shirley Trelfa	Anne Lingwood	Maureen Brand
<b>Sidespersons</b>	Brenda Liptrot David Bull	Caroline and Ted Green	Joan and Ken Sharman	Judy and Mike Godfrey	Viv and Stephen Oliver
<b>Reader</b>	Elizabeth Salt		Alison Staines	Mike Godfrey	Ted Green
<b>Servers</b>	Maggie Kay Elizabeth		Kay Martin Elizabeth Allen	Maggie Easton Kay Martin	Elizabeth Allen Phil Clayton
<b>Communion Assistant</b>	Maggie Easton		Kay Martin	Sheila Vaughan	Elizabeth Allen
<b>Intercessor</b>	Amy Staines		Stephen Barton	David Bull	Phil Clayton
<b>Coffee</b>	Lynn and David Edge	Alison Anketell Pam Towle	June Frayn Betty Lyne	Elizabeth Allen Trish Jones	Caroline Green Brenda Eley
<b>Healing</b>				TBA	
<b>Transport</b>	Elizabeth Allen	Betty Bradbury	Martin Dewes	Brenda Liptrot	Ray Allen
<b>Flowers</b>	Easter flowers	Easter flowers	Caroline Green	Caroline Green	TBA

12.30 pm St Michael's	1 April Baptism	Reader	Intercessor	Server
		Sonia Doidge	Rita Athersmith	Elizabeth Salt

6.00 pm St Michael's	1 April No service	8 April Communion	15 April No service	22 April Evensong	29 April
<b>Sidesperson</b>		Lyn Shiel		Margaret Frean	
<b>Reader</b>		Lyn Shiel		Margaret Frean	
<b>Server/ Communion Assistant</b>		Ray Allen			



**When in trouble  
contact God**

## **And Finally:**

I have walked that long road to freedom. I have tried not to falter; I have made missteps along the way. But I have discovered the secret that after climbing a great hill, one only finds that there are many more hills to climb.

*Nelson Mandela*

### **Professional Software & Bespoke Solutions**

- Are you still running your business using Excel or even paper?
- Do you require a scalable software solution that grows as your business does?

**New for 2018- 360° photos of your premises uploaded to Google Maps**



**PurpleViking.com**

email: [info@purpleviking.com](mailto:info@purpleviking.com)

phone: 07508 959812

### **HAYLEY'S HAPPY FEET**

Foot Health Practitioner working in the community offering Nail Trims, hard skin removal, diabetic foot care, corns.

Treatment in the comfort of your home



**Call 07805 814843 for an appointment**

## ADVERTISING IN THIS MAGAZINE

Anybody who would like to advertise here, the prices are:

Full page           £265

Half Page           £140

Quarter Page   £75

Eighth Page     £40

Please contact the office

☎ 01543 262211

✉ office@stmichaelmaryjohn.org.uk

# Cathedral ChemDry®

33 Darnford Lane, Lichfield

Staffs WS14 9RW

Telephone: 01543 418811

e-mail: cathedralchemdry@aol.com

www.cathedralchemdry.co.uk



## NEIL & SARAH WEYHAM

*Cleaning Carpets & Soft Furnishings Locally*

**MIDLANDS**  **-OVEN CARE**  
PUTTING A SMILE ON YOUR OVEN

**LOVE A CLEAN OVEN  
BUT HATE CLEANING IT?**

**WE CAN HELP!**

**PROFESSIONAL OVEN  
CLEANING ACROSS  
THE MIDLANDS**

GRUBBY OVENS....  
.....WE TURN SPOTLESS



Any oven, microwave, even BBQ.

We also de-scale washing machines, dishwashers,  
service tumble driers & anti-bacterial clean  
fridge/freezers.

Prices  
start from  
**£45**

Call: 01543 328 103

Mobile: 07488 308 889

[www.midlandsovencare.co.uk](http://www.midlandsovencare.co.uk)

Email: [enquiries@midlandsovencare.co.uk](mailto:enquiries@midlandsovencare.co.uk)



Midlands Oven Care



@MidOvenCare

# Anslow Woodburners

## SHOWROOM

### WOOD & SOLID FUEL STOVES & BOILERS

Unit 7

Anslow Business Park

Anslow, Staffordshire

DE13 9QX

**Tel: 01283 812801**

[info@anslowwoodburners.com](mailto:info@anslowwoodburners.com)

[www.anslowwoodburners.com](http://www.anslowwoodburners.com)

# **CENTRAL GARAGE**

## **(LICHFIELD) LTD**

QUEEN STREET, LICHFIELD, STAFFORDSHIRE, WS13 6QD  
info@centralgaragelichfield.co.uk

A family run business established for over 75 years.  
We not only service your car, we can offer the following:

- **Quality Body Repair Work**
- **Engine Diagnostic Work**
- **MOT Testing Station**
- **Collection & Delivery Service**
- **Courtesy Cars**

## **FREE MINI VALET WITH EVERY SERVICE**



# **01543 262826**



# The UK's cheapest – GUARANTEED!

The Utility Warehouse 'Double the Difference' Price Promise means you can benefit from:



Ask for details!

Frazer Sneddon  
Telephone: 01543 410717  
Mobile: 07974 122710  
[www.telecomplus.org.uk/futureproof](http://www.telecomplus.org.uk/futureproof)



Charges, terms and conditions apply. For full details of the Utility Warehouse Price Promise see [www.utilitywarehouse.co.uk](http://www.utilitywarehouse.co.uk)



ThreeSpires  
PHYSIOTHERAPY

## HOME VISIT PHYSIOTHERAPY

For ALL your physiotherapy needs, including:

- Post-Operative Rehabilitation
- Neurological Rehabilitation, for conditions such as Stroke
- Improving mobility and fitness
- Relief from Musculoskeletal injuries, such as back and neck pain



T: 07884 281623

E: [enquiries@threespiresphysiotherapy.co.uk](mailto:enquiries@threespiresphysiotherapy.co.uk)  
[www.threespiresphysiotherapy.co.uk](http://www.threespiresphysiotherapy.co.uk)

## G. A. CANNELL MEMORIALS

*Individual designs & personal  
attention our speciality*

*Also : Memorial Renovations and Repairs.*

**FREE QUOTE**

*Home visits available at no extra charge - No obligation*

Visit our Showroom at: Curborough Hall  
Craft Farm, Water Lane, Lichfield Or  
Telephone: (01543) 256395  
Web: [www.cannellmemorials.co.uk](http://www.cannellmemorials.co.uk)

Open: Wed-Sun 10.30am-5pm



**PROTECT YOUR  
HOME WITH  
SMOKE  
ALARMS**



**Freephone  
0800 0241 999**  
**For a Free  
Home Fire Risk Check**

Alternatively contact us on the numbers below  
Minicom - 0800 0241 998  
Text - 07528 983101

[www.staffordshirefire.gov.uk](http://www.staffordshirefire.gov.uk)

**MORE** Staffordshire  
Fire and Rescue Service  
Working in partnership with the Fire and Rescue Authority

Calls from a mobile will be charged at your standard rate

## JUDY BARBER

FOOT HEALTH  
PRACTITIONER



01543 416068

HOME VISITS AVAILABLE

Corns, callus,  
General foot care

Our family would like to  
help your family.

We are an independent, family  
business from Lichfield.

At your service 24 hours.



House of Minster Funeral Home,  
26 Tamworth Street, Lichfield, WS13 6JJ

enquiries@jukesfuneralservices.com  
www.jukesfuneralservices.com

**01543 415050**

## P.J. NEVILLE MEMORIALS

Hand carved quality  
memorials. Renewals.  
Additional inscriptions.

House numbers.

Home visits and brochure at no  
extra cost.

Willow Court, Tamworth  
Road, Lichfield, Staffs.

WS14 9HD

Telephone and fax:

**01543 263440**

## TURN TO US FOR HELP AND SUPPORT

In your time of need we'll take care of  
all the funeral arrangements.  
Call us 24 hours a day.

- Funeral Pre-Payment Plans • Memorials

## F M & J WAIT FUNERAL DIRECTORS

25 Bird Street  
Lichfield WS13 6PW  
**01543 263138**

6 Victoria Road  
Tamworth B79 7HL  
**01827 64031**



Part of Dignity plc. A British Company



## The co-operative funeralcare

Locally owned by The Midcounties Co-operative

Our caring staff are here to listen and  
advise you, 24 hours a day, 7 days a week.

**- Funeral Pre-Payment Plans  
- Memorial Masonry**

1 Birmingham Road, Lichfield  
**Tel: 01543 416660**

**www.coopfunerals.co.uk**



National Association  
of Funeral Directors

# Who's Who

<p align="center"><b>St Michaels PCC</b></p> <p><b>Churchwardens:</b> <i>Lyn Shiel 320437</i> <i>Sue Jones 415242</i></p> <p><b>Assistant Wardens:</b> <i>June Frayn 264920</i> <i>Caroline Green 262342</i> <i>David Easton 255308</i></p> <p><b>Treasurer:</b> <i>Viv Oliver 258054</i></p> <p><b>PCC Secretary:</b> <i>Phil Clayton 263244</i></p> <p><b>Stewardship Recorder:</b> <i>David Athersmith 255979</i></p> <p><b>Electoral Roll Officer:</b> <i>Mike Godfrey 264255</i></p>	<p align="center"><b>St John's PCC</b></p> <p><b>Churchwardens:</b> Christine Gilbert 07821 987999 John Alsop 480240</p> <p><b>Assistant Churchwardens:</b> Pat Owen 410826 Linda Rubisch 481294</p> <p><b>Treasurer:</b> Sheila Irvine 252982</p> <p><b>PCC Secretary:</b> Christine Higgs 410351</p> <p><b>Assistant Treasurer &amp; Electoral Roll:</b> Linda Rubisch 481294</p> <p><b>PCC Lay Vice Chair:</b> Christine Higgs 410351</p>
<p align="center"><b>St Michael's Church</b></p> <p><b>Verger:</b> <i>Lynn Rock 252634 or 07765 312411</i></p> <p><b>Sacristan and Head Server:</b> <i>Maggie Easton 255308</i></p> <p><b>Organist and Choirmaster:</b> <i>Peter Hawks-worth 251938 or 07771 986538</i></p> <p><b>Music Group:</b> <i>Richard Brooks 07918 906 350</i></p> <p><b>Transport Rota:</b> <i>Brenda Liptrot 251863</i></p> <p><b>Pastoral Care:</b> <i>Peter Salt 250723</i></p> <p><b>Flowers:</b> <i>Diana Baker 01543 416232</i></p> <p><b>Safeguarding:</b> <i>Maureen Brand 264880</i></p> <p><b>Junior Praise:</b> <i>Viv Oliver 258054</i></p> <p><b>Bellringers:</b> <i>Gillian Eastwood 480017,</i> Thursdays, 7:30pm to 8:55pm. <a href="mailto:gillieastwood@gmail.com">gillieastwood@gmail.com</a></p> <p><b>Mothers Union:</b> <i>Caroline Green 262342</i></p> <p><b>PAWS:</b> <i>Lesley Allen 251654 or Kath Bird 253306</i></p> <p><b>Social Team:</b> <i>Contact via the office 262211</i></p>	<p align="center"><b>St John's Church, Wall</b></p> <p><b>Verger:</b> Hilary Barker 480220</p> <p><b>Pastoral Care:</b> Revd. Denise Youngs 672646</p> <p><b>Safeguarding:</b> Maureen Brand 264880</p> <p><b>Magazine Distributer:</b> Eileen Carson 254107</p> <p align="center"><b>Other Useful Numbers</b></p> <p><b>St Mary's Centre:</b> 256611</p> <p><b>St Michael's School:</b> 227425</p> <p align="center"><b>Parish Magazine</b></p> <p><b>Magazine Distributor:</b> <i>Barbara Homewood 255909</i> E-mail <a href="mailto:brian@britcave.co.uk">brian@britcave.co.uk</a> Magazine Editor: <i>David Bull 07525 012272</i> or email: <a href="mailto:dkbull053@hotmail.co.uk">dkbull053@hotmail.co.uk</a></p>
<p align="center"><b>Scouting and Guiding</b></p> <p><b>Group Scout Leader</b> Carl Hall 07988 685378 <a href="mailto:chair@7thlichfield.org.uk">chair@7thlichfield.org.uk</a></p> <p><b>Rainbows:</b> <i>Becky Bickley 07703 671568</i> <i>Vicki Davies Friend 07970 549284</i> <i>Hannah Heath 07854 824443</i></p> <p><b>Brownies:</b> <i>Julie Cragg 301098</i></p> <p><b>Guides:</b> <i>Lisa Webb 07900 164587</i></p>	



